

Datasheet for ABIN1590132
anti-NPC1 antibody (Internal Region)[Go to Product page](#)

1 Image

Overview

Quantity:	100 µg
Target:	NPC1
Binding Specificity:	Internal Region
Reactivity:	Human
Host:	Goat
Clonality:	Polyclonal
Conjugate:	This NPC1 antibody is un-conjugated
Application:	ELISA, Western Blotting (WB)

Product Details

Purpose:	NPC1
Sequence:	TYHTVLQTSA DFID
Isotype:	IgG
Cross-Reactivity:	Human
Purification:	Purified from goat serum by ammonium sulphate precipitation followed by antigen affinity chromatography using the immunizing peptide.
Grade:	Verified

Target Details

Target:	NPC1
---------	------

Target Details

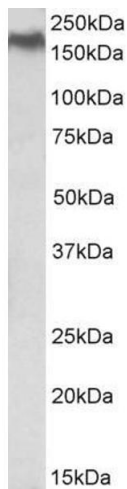
Alternative Name:	NPC1 (NPC1 Products)
Background:	NPC1, Niemann-Pick disease, type C1, FLJ98532, NPC
Gene ID:	4864
NCBI Accession:	NP_000262

Application Details

Application Notes:	Western Blot: Approx 170 kDa band observed in lysates of cell line HEK293 (calculated MW of 142 kDa according to NP_000262.2). Recommended concentration: 0.5-1.5 µg/mL. Peptide ELISA: antibody detection limit dilution 1:128000.
Restrictions:	For Research Use only

Handling

Format:	Liquid
Concentration:	0.5 mg/mL
Buffer:	Supplied at 0.5 mg/mL in Tris saline, 0.02 % sodium azide, pH 7.3 with 0.5 % bovine serum albumin.
Preservative:	Sodium azide
Precaution of Use:	This product contains Sodium azide: a POISONOUS AND HAZARDOUS SUBSTANCE which should be handled by trained staff only.
Handling Advice:	Minimize freezing and thawing.
Storage:	-20 °C
Storage Comment:	Aliquot and store at -20°C, with minimal freeze/thawing. A working aliquot may be refrigerated at 4°C for a few weeks and still remain viable.



Western Blotting

Image 1. ABIN1590132 (0.5µg/ml) staining of HEK293 lysate (35µg protein in RIPA buffer). Primary incubation was 1 hour. Detected by chemiluminescence.