

Datasheet for ABIN1590142  
**anti-IFNAR1 antibody (AA 353-364)**



[Go to Product page](#)

1 Image

## Overview

Quantity:	100 µg
Target:	IFNAR1
Binding Specificity:	AA 353-364
Reactivity:	Human
Host:	Goat
Clonality:	Polyclonal
Conjugate:	This IFNAR1 antibody is un-conjugated
Application:	Western Blotting (WB), ELISA

## Product Details

Purpose:	IFNAR1 (aa353-364)
Sequence:	PKQSGNTPVI QD
Isotype:	IgG
Cross-Reactivity:	Human
Purification:	Purified from goat serum by ammonium sulphate precipitation followed by antigen affinity chromatography using the immunizing peptide.
Grade:	Verified

## Target Details

Target:	IFNAR1
---------	--------

## Target Details

---

Alternative Name:	IFNAR1 ( <a href="#">IFNAR1 Products</a> )
Background:	IFNAR1, interferon (alpha, beta and omega) receptor 1, AVP, IFN-alpha-REC, IFNAR, IFNBR, IFRC, CRF2-1, IFN-R-1, IFN-alpha/beta receptor 1, alpha-type antiviral protein, beta-type antiviral protein, cytokine receptor class-II member 1, cytokine receptor fa
Gene ID:	3454
NCBI Accession:	<a href="#">NP_000620</a>
Pathways:	<a href="#">JAK-STAT Signaling</a> , <a href="#">Hepatitis C</a>

## Application Details

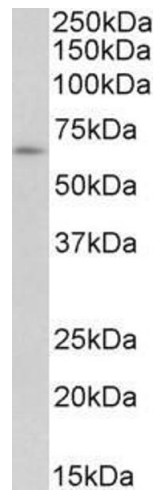
---

Application Notes:	Western Blot: Approx 65 kDa band observed in lysates of cell line K562 (calculated MW of 63.5 kDa according to NP_000620.2). Recommended concentration: 0.3-1 µg/mL. Peptide ELISA: antibody detection limit dilution 1:128000.
Restrictions:	For Research Use only

## Handling

---

Format:	Liquid
Concentration:	0.5 mg/mL
Buffer:	Supplied at 0.5 mg/mL in Tris saline, 0.02 % sodium azide, pH 7.3 with 0.5 % bovine serum albumin.
Preservative:	Sodium azide
Precaution of Use:	This product contains Sodium azide: a POISONOUS AND HAZARDOUS SUBSTANCE which should be handled by trained staff only.
Handling Advice:	Minimize freezing and thawing.
Storage:	-20 °C
Storage Comment:	Aliquot and store at -20°C, with minimal freeze/thawing. A working aliquot may be refrigerated at 4°C for a few weeks and still remain viable.



### Western Blotting

**Image 1.** ABIN1590142 (0.3µg/ml) staining of K562 lysate (35µg protein in RIPA buffer). Primary incubation was 1 hour. Detected by chemiluminescence.