

Datasheet for ABIN1607604

anti-HCP antibody**3** Images[Go to Product page](#)

Overview

Quantity:	100 µL
Target:	HCP
Reactivity:	E. coli
Host:	Rabbit
Clonality:	Polyclonal
Conjugate:	This HCP antibody is un-conjugated
Application:	Western Blotting (WB), ELISA

Product Details

Purpose:	Anti-Host Cell Proteins Antibody recognizes high and low molecular weight protein fractions from E.coli.
Immunogen:	Anti-Host Cell Proteins Antibody was prepared combining antibodies that have been separately developed by repeated immunizations with a mixture of high molecular weight (HMW) and a mixture of low molecular weight (LMW) proteins from E.Coli. Immunogen Type: Native Protein
Specificity:	E.coli HCP Antibody is directed against high molecular weight and low molecular weight E.coli Host Cell Proteins. This whole rabbit antiserum was prepared by delipidation and defibrination followed by the addition of buffer salts and preservative. The anti-sera reactivity is directed against E.coli Host Cell Proteins.
Cross-Reactivity (Details):	Cross reactivity with other species is likely but has not been determined. Reactivity against homologues from other sources is not known.

Product Details

Characteristics:	Anti-Host Cell Proteins Antibody recognizes high and low molecular weight protein fractions from E.coli. This antibody has been validated by 2D electrophoresis western blot to assure highest possible coverage of E.coli HCP. Host Cell Proteins are process-related impurities derived from a host cell expression system that may be present in trace amounts in a final drug substance. HCP Antibodies are used to detect impurities in biologically-based therapeutics. Detecting impurities often unseen by 1-D electrophoresis, a 2D electrophoresis western blot analysis delivers more complete insight into the immunocoverage of protein components of the host cell lysate. Synonyms: Host Cell Protein antibody, HCP antibody, Anti-HCP, Anti-Host Cell Protein, ECP antibody, Anti-ECP
Purification:	This whole rabbit antiserum was prepared by delipidation and defibrination followed by the addition of buffer salts and preservative. Reactivity is directed against E.coli Host Cell Proteins.
Sterility:	Sterile filtered

Target Details

Target:	HCP
Alternative Name:	Host Cell Proteins (HCP Products)

Application Details

Application Notes:	Western Blot Dilution: 1:500 - 1:1000 ELISA : 1:1000-1:2000
Comment:	Anti-Host Cell Proteins Antibody detects over 300 E.coli proteins and is suitable for western blotting and ELISA.
Restrictions:	For Research Use only

Handling

Format:	Liquid
Concentration:	77.5 mg/mL
Buffer:	0.02 M Potassium Phosphate, 0.15 M Sodium Chloride, pH 7.2, 0.01% (w/v) Sodium Azide
Preservative:	Sodium azide
Precaution of Use:	This product contains Sodium azide: a POISONOUS AND HAZARDOUS SUBSTANCE, which should be handled by trained staff only.

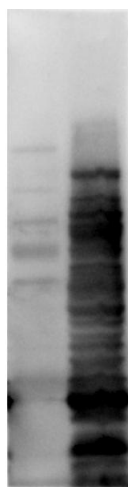
Handling

Storage: 4 °C/-20 °C

Storage Comment: Store Host Cell Proteins Antibody at -20 °C prior to opening. Aliquot contents and freeze at -20 °C or below for extended storage. Avoid cycles of freezing and thawing. Centrifuge product if not completely clear after standing at room temperature. This product is stable for several weeks at 4 °C as an undiluted liquid. Dilute only prior to immediate use.

Expiry Date: 12 months

Validation report #104288 for Cleavage Under Targets and Release Using Nuclease (CUT&RUN)



Western Blotting

Image 1. Western Blot of Rabbit anti-HCP antibody. Lane 1: Molecular Weight. Lane 2: Total HCP. Load: 10µg per lane. Primary antibody: Rabbit anti-HCP cocktail at 1:1000 for overnight at 4°C. Secondary antibody: Goat anti-rabbit secondary antibody at 1:10,000 for 30 min at RT. Block: ABIN925618 for 1 hour at RT.

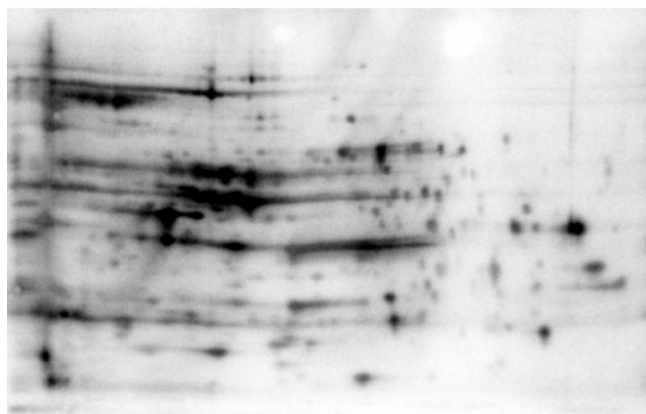


Image 2. 2D Western Blot of anti-E.coli HCP antibody. Load: 35 µg Total HCP. pH: 5-8. Primary antibody: Rabbit anti-HCP antibody at 1:200 for overnight at 4°C. Secondary antibody: Goat anti-rabbit secondary antibody at 1:10,000 for 30 min at RT. Block: ABIN925618 for 1 hour at RT.

ELISA

Image 3. ELISA of Rabbit anti-Host Cell Protein antibody. Antigen: BSA conjugates of HCP. Coating amount: 1 µg per well titrated 1:3 in 1XPBS. Primary antibody: Anti-HCP antibody at 100 ng/well. Secondary antibody: Peroxidase rabbit secondary antibody at 1:10,000. Substrate: TMB for 30min.

