



[Go to Product page](#)

Datasheet for ABIN1607648

anti-Beta-Phosphoglucomutase antibody (Biotin)

1 Image

Overview

Quantity:	100 µg
Target:	Beta-Phosphoglucomutase
Reactivity:	Lactococcus lacti
Host:	Goat
Clonality:	Polyclonal
Conjugate:	This Beta-Phosphoglucomutase antibody is conjugated to Biotin
Application:	Western Blotting (WB), ELISA

Product Details

Immunogen:	beta Phosphoglucomutase [Lactococcus lacti] Immunogen Type: Native Protein
Isotype:	IgG
Cross-Reactivity (Details):	Cross reactivity against Beta-Phosphoglucomutase from other sources is unknown.
Purity:	Anti-Beta-Phosphoglucomutase is an IgG fraction antibody purified from monospecific antiserum by a multi-step process which includes delipidation, salt fractionation and ion exchange chromatography followed by extensive dialysis against the buffer stated above. Assay by immunoelectrophoresis resulted in a single precipitin arc against anti-Biotin, anti-Goat Serum as well as purified and partially purified Beta-Phosphoglucomutase [Lactococcus lacti].
Endotoxin Level:	Low Endotoxin : No

Target Details

Target:	Beta-Phosphoglucomutase
Alternative Name:	Beta-Phosphoglucomutase (Beta-Phosphoglucomutase Products)
Background:	Anti-Beta-Phosphoglucomutase antibody is located in the cytoplasm, working to catalyze the transference of a phosphoryl group on a glucose or lactose monomer from the 1' to the 6' position in the forward direction or 6' to the 1' position in the reverse direction. Anti-Beta-Phosphoglucomutase is essential to regulating the flow of carbohydrate intermediates in glycolysis as well as the formation of the sugar nucleotide UDP-glucose. Part of the HAD-like hydrolase superfamily, Anti-Beta-Phosphoglucomutase antibody is ideal for researchers interested in Metabolism research. Synonyms: Beta PGM antibody, Glucose phosphomutase 1 antibody, Glucose phosphomutase antibody, PGM antibody, pgmB antibody
Gene ID:	1114041
UniProt:	P71447

Application Details

Application Notes:	Anti-Beta-Phosphoglucomutase has been assayed against 1.0 µg of Beta-Phosphoglucomutase in a standard capture ELISA using Peroxidase Conjugated Streptavidin #S000-03 and ABTS (2,2'-azino-bis-[3-ethylbenthiiazoline-6-sulfonic acid]) code # ABTS-100 as a substrate for 30 minutes at room temperature. A working dilution of 1:10.000 to 1:50.000 is suggested for this product. ELISA Dilution: 1:5.000 - 1:25.000 Western Blot Dilution: 1:500 - 1:3.000
Restrictions:	For Research Use only

Handling

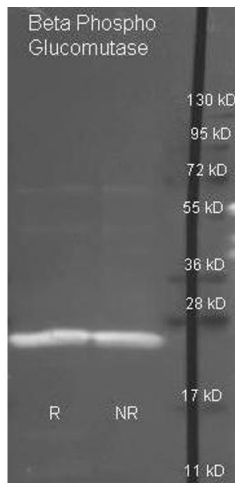
Format:	Liquid
Concentration:	10 mg/mL
Buffer:	0.02 M Potassium Phosphate, 0.15 M Sodium Chloride, pH 7.2 Stabilizer: 10 mg/mL Bovine Serum Albumin (BSA) - Immunoglobulin and Protease free
Handling Advice:	Store the vial at -20°C or below after dilution. Avoid cycles of freezing and thawing.
Storage:	-20 °C
Storage Comment:	Store vial at -20 °C or below prior to opening. This vial contains a relatively low volume of

Handling

reagent (25 μ L). To minimize loss of volume dilute 1:10 by adding 225 μ L of the buffer stated above directly to the vial. Recap, mix thoroughly and briefly centrifuge to collect the volume at the bottom of the vial. Use this intermediate dilution when calculating final dilutions as recommended below.

Expiry Date: Expiration date is one (1) year from date of opening.

Images



Western Blotting

Image 1. Goat anti antibody was used to detect purified Beta Phospho Glucomutase under reducing (R) and non-reducing (NR) conditions. Reduced samples of protein contained 4% BME and were boiled for 5 minutes. Samples of \sim 1 μ g of protein per lane were run by SDS-PAGE. Protein was transferred to nitrocellulose and probed with 1:3000 dilution of primary antibody (ON 4 C in ABIN925618). Detection shown was using Dylight 488 conjugated Donkey anti goat (605-741-125 lot 21094 1:10K in TBS/ABIN925618 1 hr RT). Images were collected using the BioRad VersaDoc System.