

Datasheet for ABIN1607671

anti-Lactate Dehydrogenase antibody (Biotin)**3** Images**1** Publication[Go to Product page](#)

Overview

Quantity:	100 µg
Target:	Lactate Dehydrogenase (LDH)
Reactivity:	Rabbit
Host:	Goat
Clonality:	Polyclonal
Conjugate:	This Lactate Dehydrogenase antibody is conjugated to Biotin
Application:	Western Blotting (WB), ELISA, Immunoprecipitation (IP)

Product Details

Immunogen:	Lactate Dehydrogenase [full length protein isolated from rabbit muscle] Immunogen Type: Native Protein
Isotype:	IgG
Cross-Reactivity (Details):	Cross reactivity against Lactate Dehydrogenase from other sources may occur but have not been specifically determined.
Purity:	Anti-lactate dehydrogenase antibody is an IgG fraction antibody purified from monospecific antiserum by a multi-step process which includes delipidation, salt fractionation and ion exchange chromatography followed by extensive dialysis against the buffer stated above. Assay by immunoelectrophoresis resulted in a single precipitin arc against anti-Biotin, anti-Goat Serum as well as purified and partially purified Lactate Dehydrogenase [Rabbit Muscle].
Endotoxin Level:	Low Endotoxin : No

Target Details

Target:	Lactate Dehydrogenase (LDH)
Alternative Name:	Lactate Dehydrogenase (LDH Products)
Background:	Anti-lactate dehydrogenase recognizes lactate dehydrogenase which catalyzes the interconversion of pyruvate to lactate and NADH to NAD ⁺ . This reaction occurs in the absence or lack of oxygen, making lactate dehydrogenase critical for anaerobic respiration. There are five known isozymes of LDH, each localized in different types of tissue. In medicine, LDH is often used as a marker of various diseases ranging from hemolysis to encephalitis. Anti-lactate dehydrogenase antibody is ideal for investigators interested in Metabolism, Cancer, and Signal Transduction. Synonyms: L-lactate dehydrogenase A chain LDH-A LDH muscle subunit LDH-M
Gene ID:	100009107, 126050
UniProt:	P13491

Application Details

Application Notes:	<p>Anti-lactate dehydrogenase antibody has been assayed against 1.0 µg of Lactate Dehydrogenase in a standard capture ELISA using Peroxidase Conjugated Streptavidin #S000-03 and ABTS (2,2'-azino-bis-[3-ethylbenzothiazoline-6-sulfonic acid]) code # ABTS-100 as a substrate for 30 minutes at room temperature. A working dilution of 1:4,000 to 1:20,000 of the reconstitution concentration is suggested for this product.</p> <p>ELISA Dilution: 1:5,000 - 1:20,000</p> <p>IF Immunoprecipitation Dilution: 1:100</p> <p>Western Blot Dilution: 1:500 - 1:5,000</p>
Restrictions:	For Research Use only

Handling

Format:	Liquid
Concentration:	10 mg/mL
Buffer:	0.02 M Potassium Phosphate, 0.15 M Sodium Chloride, pH 7.2 Stabilizer: 10 mg/mL Bovine Serum Albumin (BSA) - Immunoglobulin and Protease free
Handling Advice:	Store the vial at -20°C or below after dilution. Avoid cycles of freezing and thawing.
Storage:	-20 °C
Storage Comment:	Store vial at -20 °C or below prior to opening. This vial contains a relatively low volume of

reagent (25 µL). To minimize loss of volume dilute 1:10 by adding 225 µL of the buffer stated above directly to the vial. Recap, mix thoroughly and briefly centrifuge to collect the volume at the bottom of the vial. Use this intermediate dilution when calculating final dilutions as recommended below.

Expiry Date: Expiration date is one (1) year from date of opening.

Publications

Product cited in: Rivera-Casas, Gonzalez-Romero, Garduño, Cheema, Ausio, Eirin-Lopez: "Molecular and Biochemical Methods Useful for the Epigenetic Characterization of Chromatin-Associated Proteins in Bivalve Molluscs." in: **Frontiers in physiology**, Vol. 8, pp. 490, (2017) ([PubMed](#)).

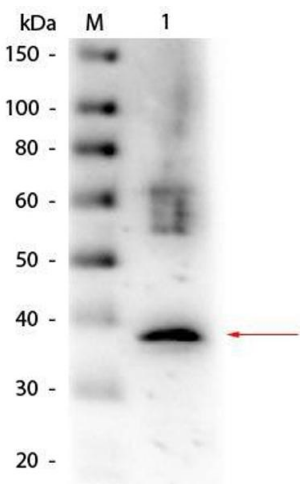
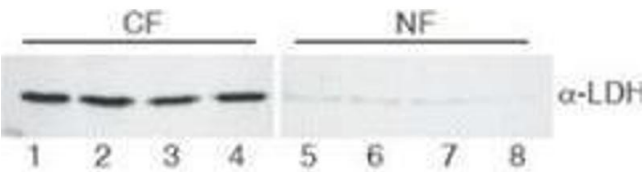
Images

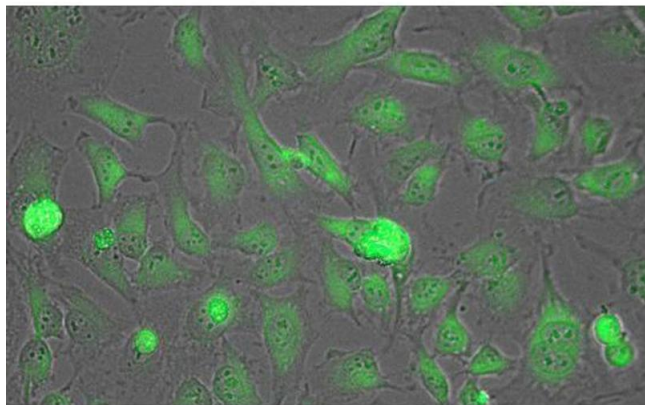
Western Blotting

Image 1. Western Blot of Goat Anti-Lactate Dehydrogenase antibody. Lane 1-4: HeLa cell extracts cytoplasmic fraction (CF). Lane 5-8: HeLa cell extracts nuclear fraction (NF). Load: 30 µg per lane. Primary antibody: LDH antibody at 1:400 for overnight at 4°C. Secondary antibody: secondary antibody at 1:10,000 for 45 min at RT. Block: 5% BLOTTO/TBST overnight at 4°C. Predicted/Observed size: 36.6 kDa, 36 kDa for LDH. Other band(s): None.

Western Blotting

Image 2. Western Blot of Goat anti-Lactate Dehydrogenase Antibody Biotin Conjugated. Lane 1: Lactate Dehydrogenase (Rabbit Muscle). Load: 50 ng per lane. Primary antibody: Goat anti-Lactate Dehydrogenase Antibody Biotin Conjugated at 1:1,000 overnight at 4°C. Secondary antibody: HRP streptavidin secondary antibody at 1:40,000 for 30 min at RT. Block: ABIN925618 for 30 min at RT. Predicted/Observed size: 36.5 kDa, 36.5 kDa for Lactate Dehydrogenase.





Immunofluorescence

Image 3. Immunofluorescence Microscopy of Biotin conjugated Anti-Lactate Dehydrogenase Antibody. Tissue: HeLa cells. Fixation: fixed for 5 min in 1:1 MeTOH:Acetone, blocked with MB-071 (preservative free) for 15 min. Antigen retrieval: not required. Primary antibody: Lactate Dehydrogenase antibody at 1:200 for 1 h at RT. Secondary antibody: DyLight 488 conjugated Streptavidin antibody at 1:10,000 for 30 min at RT. Staining: Lactate Dehydrogenase as green fluorescent signal.