

Datasheet for ABIN1607675
anti-Pepsin antibody (Biotin)[Go to Product page](#)

1 Image

Overview

Quantity:	100 µg
Target:	Pepsin
Reactivity:	Pig
Host:	Goat
Clonality:	Polyclonal
Conjugate:	This Pepsin antibody is conjugated to Biotin
Application:	Western Blotting (WB), Immunohistochemistry (IHC), ELISA

Product Details

Immunogen:	Pepsin [Porcine Stomach] Immunogen Type: Native Protein
Isotype:	IgG
Cross-Reactivity (Details):	Cross reactivity against Pepsin from other sources may occur but have not been specifically determined.
Purity:	Anti-Pepsin antibody is an IgG fraction antibody purified from monospecific antiserum by a multi-step process which includes delipidation, salt fractionation and ion exchange chromatography followed by extensive dialysis against the buffer stated above. Assay by immunoelectrophoresis resulted in a single precipitin arc against anti-Biotin, anti-Goat Serum as well as purified and partially purified Pepsin [Porcine Stomach].
Endotoxin Level:	Low Endotoxin : No

Target Details

Target:	Pepsin
Abstract:	Pepsin Products
Background:	<p>Pepsin antibody detects Pepsin protein. Pepsin is an enzyme whose pepsinogen is released by the chief cells in the stomach and degrades food proteins into peptides. Pepsin belongs to the peptidase A1 family and is one of three principal proteolytic enzymes in the digestive system. Pepsin is most efficient in cleaving peptide bonds between hydrophobic and preferably aromatic amino acids such as phenylalanine, tryptophan, and tyrosine at positions P1 and P1'.</p> <p>Anti-Pepsin Antibody is ideal for investigators involved in Cell Signaling and Cell Biology research. Synonyms: ec 3.4.23.1 antibody, Pepsin A antibody, Pepsin a precursor antibody, Pepsin antibody, Pepsinogen 1 second locus antibody, Pepsinogen 3 group 1 antibody, Pepsinogen a3 antibody</p>
Gene ID:	396892
UniProt:	P00791

Application Details

Application Notes:	<p>Anti-Pepsin antibody is suitable for ELISA, Immunohistochemistry, and Western Blot. Expect band at 41.2 kDa in appropriate cell lysate or extract. Specific conditions for reactivity should be optimized by the end user.</p> <p>ELISA Dilution: 1:3.000 - 1:15.000</p> <p>Western Blot Dilution: 1:500 - 1:2.000</p>
Restrictions:	For Research Use only

Handling

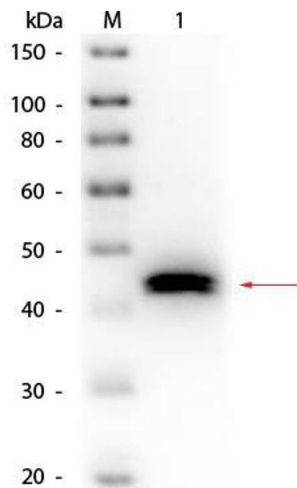
Format:	Liquid
Concentration:	10 mg/mL
Buffer:	<p>0.02 M Potassium Phosphate, 0.15 M Sodium Chloride, pH 7.2</p> <p>Stabilizer: 10 mg/mL Bovine Serum Albumin (BSA) - Immunoglobulin and Protease free</p>
Handling Advice:	Store the vial at -20°C or below after dilution. Avoid cycles of freezing and thawing.
Storage:	-20 °C
Storage Comment:	Store vial at -20 °C or below prior to opening. This vial contains a relatively low volume of reagent (25 µL). To minimize loss of volume dilute 1:10 by adding 225 µL of the buffer stated

Handling

above directly to the vial. Recap, mix thoroughly and briefly centrifuge to collect the volume at the bottom of the vial. Use this intermediate dilution when calculating final dilutions as recommended below.

Expiry Date: Expiration date is one (1) year from date of opening.

Images



Western Blotting

Image 1. Western Blot of Goat anti-Pepsin Antibody Biotin Conjugated. Lane 1: Pepsin. Load: 50 ng per lane. Primary antibody: Goat anti-Pepsin Antibody Biotin Conjugated 1:1,000 overnight at 4°C. Secondary antibody: HRP Streptavidin at 1:40,000 for 30 min at RT. Block: ABIN925618 for 30 min at RT. Predicted/Observed size: 41 kDa, 41 kDa for Pepsin.