

Datasheet for ABIN1607707
anti-CPB1 antibody (Biotin)



[Go to Product page](#)

1 Image

Overview

Quantity:	100 µg
Target:	CPB1
Reactivity:	Pig
Host:	Rabbit
Clonality:	Polyclonal
Conjugate:	This CPB1 antibody is conjugated to Biotin
Application:	Western Blotting (WB), ELISA

Product Details

Purpose:	Carboxypeptidase B Antibody Biotin Conjugated
Immunogen:	Immunogen: Carboxypeptidase B [Porcine Pancreas] Immunogen Type: Native Protein
Isotype:	IgG
Cross-Reactivity (Details):	Assay by immunoelectrophoresis resulted in a single precipitin arc against anti-Biotin, anti-Rabbit Serum as well as purified and partially purified Carboxypeptidase B [Porcine Pancreas].
Characteristics:	Synonyms: rabbit anti-Carboxypeptidase B antibody biotin conjugation, biotin conjugated rabbit anti-Carboxypeptidase B Antibody, CarboxypeptidaseB1 antibody, CP B1 antibody, CPB 1 antibody, CPB antibody, CPB1 antibody, DKFZp779K1333 antibody, Pancreas specific protein antibody, Pancreatic carboxypeptidase B1 antibody
Purification:	Anti-CARBOXYPEPTIDASE B (RABBIT) Antibody is an IgG fraction antibody purified from monospecific antiserum by a multi-step process which includes delipidation, salt fractionation

Product Details

and ion exchange chromatography followed by extensive dialysis against the buffer stated above.

Target Details

Target:	CPB1
Alternative Name:	CPB1 (CPB1 Products)
Background:	Background: A carboxypeptidase (EC number 3.4.16 - 3.4.18) is a protease enzyme that hydrolyzes (cleaves) a peptide bond at the carboxy-terminal (C-terminal) end of a protein or peptide. (Contrast with an aminopeptidase, which cleaves peptide bonds at the other end of the protein.) Humans, animals, and plants contain several types of carboxypeptidases that have diverse functions ranging from catabolism to protein maturation. Carboxypeptidase B is a carboxypeptidase that preferentially acts upon basic amino acids, such as arginine and lysine. This serum enzyme is also responsible for rapidly metabolizing the C5a protein into C5a des-Arg, with one less amino acid.
Gene ID:	397341
NCBI Accession:	NP_999334
UniProt:	P09955

Application Details

Application Notes:	<p>Application Note: Anti-CARBOXYPEPTIDASE B Biotin Antibody has been tested by Western Blot and is suitable to be assayed against 1.0 µg of Carboxypeptidase B in a standard capture ELISA using Peroxidase Conjugated Streptavidin #S000-03 and ABTS (2,2'-azino-bis-[3-ethylbenthiazoline-6-sulfonic acid]) code # ABTS-100 as a substrate for 30 minutes at room temperature. A working dilution of 1:4,000 to 1:20,000 of the reconstitution concentration is suggested for this product.</p> <p>Western Blot Dilution: 1:500 - 1:3,000</p> <p>ELISA Dilution: 1:5,000 - 1:25,000</p> <p>Other: User Optimized</p>
Restrictions:	For Research Use only

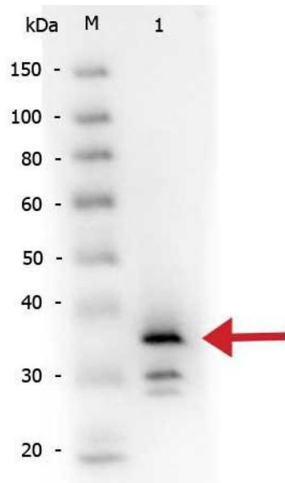
Handling

Format:	Lyophilized
---------	-------------

Handling

Reconstitution:	Reconstitution Volume: 100 µL Reconstitution Buffer: Restore with deionized water (or equivalent)
Concentration:	10 mg/mL
Buffer:	Buffer: 0.02 M Potassium Phosphate, 0.15 M Sodium Chloride, pH 7.2 Stabilizer: 10 mg/mL Bovine Serum Albumin (BSA) - Immunoglobulin and Protease free Preservative: 0.01 % (w/v) Sodium Azide
Preservative:	Sodium azide
Precaution of Use:	This product contains Sodium azide: a POISONOUS AND HAZARDOUS SUBSTANCE which should be handled by trained staff only.
Storage:	4 °C,-20 °C
Storage Comment:	Store vial at 4° C prior to restoration. For extended storage aliquot contents and freeze at -20° C or below. Avoid cycles of freezing and thawing. Centrifuge product if not completely clear after standing at room temperature. This product is stable for several weeks at 4° C as an undiluted liquid. Dilute only prior to immediate use.
Expiry Date:	12 months

Images



Western Blotting

Image 1. Western Blot of Rabbit anti-Carboxypeptidase B antibody Biotin conjugated. Lane 1: Carboxypeptidase B. Load: 50 ng per lane. Primary antibody: Rabbit anti-Carboxypeptidase B antibody Biotin conjugated at 1:1,000 overnight at 4°C. Secondary antibody: HRP conjugated rabbit secondary antibody at 1:40,000 for 30 min at RT. Block: Blocking buffer for Fluorescent Western Blotting (ABIN925618) at RT for 30 min. Predicted/Observed size: ~35 kDa