



[Go to Product page](#)

Datasheet for ABIN1607719  
**anti-Trypsin antibody (Biotin)**

1 Image

Overview

Quantity:	100 µg
Target:	Trypsin
Reactivity:	Cow
Host:	Rabbit
Clonality:	Polyclonal
Conjugate:	This Trypsin antibody is conjugated to Biotin
Application:	ELISA, Western Blotting (WB)

Product Details

Immunogen:	Anti-Trypsin Antibody was produced by repeated immunizations with bovine pancreatic trypsin protein purified. Immunogen Type: Native Protein
Isotype:	IgG
Cross-Reactivity (Details):	Cross reactivity against Trypsin from other sources may occur but has not been specifically determined.
Purification:	Trypsin Antibody is an IgG fraction purified from monospecific antiserum by a multi-step process which includes delipidation, salt fractionation and ion exchange chromatography followed by extensive dialysis against the buffer stated above. Assay by immunoelectrophoresis resulted in a single precipitin arc against anti-Biotin, anti-Rabbit Serum as well as purified and partially purified Trypsin [Bovine Pancreas].
Endotoxin Level:	Low Endotoxin : No

## Target Details

---

Target:	Trypsin
Abstract:	<a href="#">Trypsin Products</a>
Background:	Anti-Trypsin Antibody detects trypsin. Trypsin is a serine protease found in the digestive system of many vertebrates, where it hydrolyses proteins. It belongs to the peptidase S1 family. Trypsin is produced in the pancreas as the inactive proenzyme trypsinogen. It cleaves peptides on the C-terminal side of lysine and arginine amino acid residues. Trypsin hydrolyzes ester and amide linkages of several synthetic substrates. Anti-Trypsin Antibody is ideal for investigators involved in Cell Signaling, Neuroscience, Signal Transduction and Biochemistry research. Synonyms: Anionic trypsinogen antibody, Beta trypsin antibody, Brain trypsinogen antibody, Cationic Trypsinogen antibody, Digestive Zymogen antibody, Mesotrypsin antibody, Mesotrypsinogen antibody
Gene ID:	780933
UniProt:	<a href="#">P00760</a>

## Application Details

---

Application Notes:	Anti-Trypsin Antibody is suitable for western blotting and for ELISA. Researchers should determine optimal titers for applications that are not stated below. ELISA Dilution: 1:5.000 - 1:25.000 Western Blot Dilution: 1:500 - 1:3.000
--------------------	---

Restrictions:	For Research Use only
---------------	-----------------------

## Handling

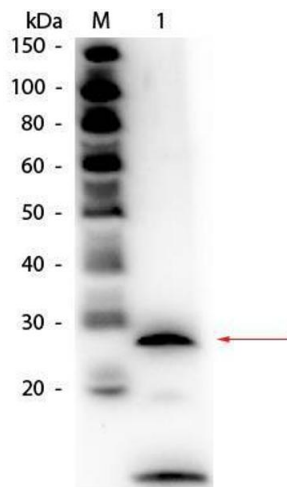
---

Format:	Liquid
Buffer:	0.02 M Potassium Phosphate, 0.15 M Sodium Chloride, pH 7.2 Stabilizer: 10 mg/mL Bovine Serum Albumin (BSA) - Immunoglobulin and Protease free
Handling Advice:	Store the vial at -20°C or below after dilution. Avoid cycles of freezing and thawing.
Storage:	-20 °C
Storage Comment:	Store vial at -20 °C or below prior to opening. This vial contains a relatively low volume of reagent (25 µL). To minimize loss of volume dilute 1:10 by adding 225 µL of the buffer stated above directly to the vial. Recap, mix thoroughly and briefly centrifuge to collect the volume at the bottom of the vial. Use this intermediate dilution when calculating final dilutions as recommended below.

## Handling

Expiry Date: Expiration date is one (1) year from date of opening.

## Images



### Western Blotting

**Image 1.** Western Blot of Rabbit anti-Trypsin Antibody Biotin Conjugated. Lane 1: Trypsin. Load: 50 ng per lane. Primary antibody: Rabbit anti-Trypsin Antibody Biotin Conjugated at 1:1,000 overnight at 4°C. Secondary antibody: HRP streptavidin secondary antibody at 1:40,000 for 30 min at RT. Block: ABIN925618 for 30 minutes at RT. Predicted/Observed size: 26 kDa, 26 kDa for Trypsin. Other band(s): autocatalytic fragment of Trypsin, ~10 kDa.