

Datasheet for ABIN1607759  
**anti-Ovalbumin antibody (Biotin)**

## 2 Images

[Go to Product page](#)

## Overview

Quantity:	100 µg
Target:	Ovalbumin (OVA)
Reactivity:	Chicken
Host:	Rabbit
Clonality:	Polyclonal
Conjugate:	This Ovalbumin antibody is conjugated to Biotin
Application:	Western Blotting (WB), ELISA, Immunoprecipitation (IP)

## Product Details

Immunogen:	Ovalbumin [Hen Egg White] Immunogen Type: Native Protein
Isotype:	IgG
Cross-Reactivity (Details):	Cross reactivities against Ovalbumin from other sources may occur but have not been specifically determined.
Purity:	Anti-Ovalbumin Antibody Biotin Conjugated is an IgG fraction antibody purified from monospecific antiserum by a multi-step process which includes delipidation, salt fractionation and ion exchange chromatography followed by extensive dialysis against the buffer stated above. Assay by immunoelectrophoresis resulted in a single precipitin arc against anti-Biotin, anti-Rabbit Serum as well as purified and partially purified Ovalbumin [Hen Egg White].
Endotoxin Level:	Low Endotoxin : No

## Target Details

Target:	Ovalbumin (OVA)
Alternative Name:	Ovalbumin ( <a href="#">OVA Products</a> )
Background:	<p>Ovalbumin Antibody Biotin Conjugated is specific for ovalbumin. Ovalbumin (abbreviated OVA) is the main protein found in egg white, making up 60-65 % of the total protein. Ovalbumin displays sequence and three-dimensional homology to the serpin superfamily. The function of ovalbumin is unknown, although it is presumed to be a storage protein or carrier protein.</p> <p>Synonyms: Ovalbumin, Egg albumin. Plakalbumin, Allergen Gal d II, Allergen=Gal d 2</p>
Gene ID:	396058
UniProt:	<a href="#">P01012</a>

## Application Details

Application Notes:	<p>Anti-Ovalbumin Antibody Biotin Conjugated is suitable for both ELISA, and for western blotting. In western blots anti-ovalbumin detects a single band of the expected apparent molecular weight. Researchers should determine optimal titers for applications that are not stated below.</p> <p>ELISA Dilution: 1:30.000</p> <p>Fluorochrome Protein Value: 10-20</p> <p>IF Immunoprecipitation Dilution: 1:100</p> <p>Western Blot Dilution: 1:500 - 1:5.000</p>
Restrictions:	For Research Use only

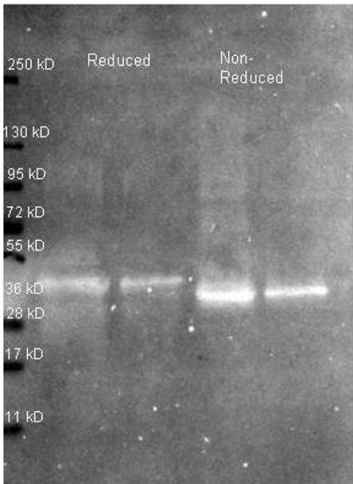
## Handling

Format:	Liquid
Concentration:	1 mg/mL
Buffer:	<p>0.02 M Potassium Phosphate, 0.15 M Sodium Chloride, pH 7.2</p> <p>Stabilizer: 10 mg/mL Bovine Serum Albumin (BSA) - Immunoglobulin and Protease free</p>
Handling Advice:	Store the vial at -20°C or below after dilution. Avoid cycles of freezing and thawing.
Storage:	-20 °C
Storage Comment:	Store vial at -20 °C or below prior to opening. This vial contains a relatively low volume of reagent (25 µL). To minimize loss of volume dilute 1:10 by adding 225 µL of the buffer stated above directly to the vial. Recap, mix thoroughly and briefly centrifuge to collect the volume at the bottom of the vial. Use this intermediate dilution when calculating final dilutions as

recommended below.

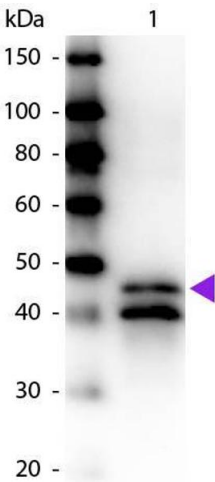
Expiry Date: Expiration date is one (1) year from date of opening.

Images



Western Blotting

**Image 1.** Western Blot of Rabbit anti-Ovalbumin antibody. Lane 1: ~1 µg Ovalbumin protein reduced. Lane 2: 0.25 µg Ovalbumin protein reduced. Lane 3: ~1 µg Ovalbumin protein non-reduced. Lane 4: 0.25 µg Ovalbumin protein non-reduced. Primary antibody: Ovalbumin antibody at 1:5000 for overnight at 4°C. Secondary antibody: Atto 425 conjugated goat anti rabbit secondary antibody at 1:10,000 for 1.5 hr at RT. Block: ABIN925618 buffer overnight at 4°C. Predicted/Observed size: 42.9 kDa, ~36 kDa for ovalbumin. Other band(s): none.



Western Blotting

**Image 2.** Western blot of Biotin conjugated Rabbit Anti-Ovalbumin primary antibody. Lane 1: Ovalbumin. Lane 2: None. Load: 50 ng per lane. Primary antibody: Ovalbumin biotin conjugated primary antibody at 1:1,000 for 60 min at RT. Secondary antibody: Peroxidase streptavidin secondary antibody at 1:40,000 for 30 min at RT. Blocking: ABIN925618 for 30 min at RT. Predicted/Observed size: 45 kDa, 45 kDa for Ovalbumin. Other band(s): Ovalbumin splice variants and isoforms.