

Datasheet for ABIN1607777

anti-Amylase, alpha antibody (Biotin)



[Go to Product page](#)

1 Image

Overview

Quantity:	100 µg
Target:	Amylase, alpha (AMY)
Reactivity:	Bacillus amyloliquefaciens
Host:	Rabbit
Clonality:	Polyclonal
Conjugate:	This Amylase, alpha antibody is conjugated to Biotin
Application:	Western Blotting (WB), ELISA, Immunoprecipitation (IP)

Product Details

Purpose:	Alpha Amylase Antibody Biotin Conjugated
Immunogen:	Immunogen: a-Amylase [Bacillus amyloliquefaciens] Immunogen Type: Native Protein
Isotype:	IgG
Cross-Reactivity (Details):	Assay by immunoelectrophoresis resulted in a single precipitin arc against anti-Biotin, anti-Rabbit Serum as well as purified and partially purified a-Amylase [B.
Characteristics:	Synonyms: rabbit anti-Alpha Amylase Antibody biotin Conjugation, biotin conjugated rabbit anti-Alpha Amylase Antibody, Alpha-amylase, 1,4-alpha-D-glucan glucanohydrolase
Purification:	Anti-Alpha Amylase is an IgG fraction antibody purified from monospecific antiserum by a multi-step process which includes delipidation, salt fractionation and ion exchange chromatography followed by extensive dialysis against the buffer stated above.

Target Details

Target:	Amylase, alpha (AMY)
Alternative Name:	Alpha-amylase (AMY Products)
Background:	Background: Alpha Amylase is a member of the glycosyl hydrolase 13 family, involved primarily in the hydrolysis of biopolymer residues of 1, 4-alpha-D-glucosidic linkages in polysaccharides. It performs its catalytic function in metabolism of carbohydrates. Anti-Alpha Amylase antibody is ideal for investigators involved in Metabolism, Signal Transduction, and Cancer research.
Gene ID:	7849308
NCBI Accession:	WP_013352208
UniProt:	P00692

Application Details

Application Notes:	<p>Application Note: Anti-Alpha Amylase Biotin Conjugated Antibody has been tested by western blot and is suitable to be assayed against 1.0 µg of α-Amylase in a standard capture ELISA using Peroxidase Conjugated Streptavidin #S000-03 and ABTS (2,2'-azino-bis-[3-ethylbenthiazoline-6-sulfonic acid]) code # ABTS-100 as a substrate for 30 minutes at room temperature. A working dilution of 1:4,000 to 1:20,000 of the reconstitution concentration is suggested for this product.</p> <p>Western Blot Dilution: 1:500 - 1:5,000</p> <p>Immunoprecipitation Dilution: 1:100</p> <p>ELISA Dilution: 1:5,000 - 1:20,000</p> <p>Other: User Optimized</p>
Restrictions:	For Research Use only

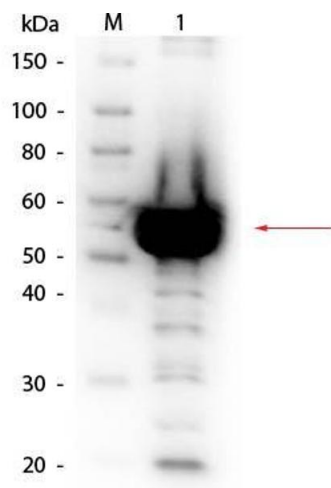
Handling

Format:	Lyophilized
Reconstitution:	Reconstitution Volume: 100 µL Reconstitution Buffer: Restore with deionized water (or equivalent)
Concentration:	10 mg/mL
Buffer:	Buffer: 0.02 M Potassium Phosphate, 0.15 M Sodium Chloride, pH 7.2 Stabilizer: 10 mg/mL Bovine Serum Albumin (BSA) - Immunoglobulin and Protease free Preservative: 0.01 % (w/v) Sodium Azide

Handling

Preservative:	Sodium azide
Precaution of Use:	This product contains Sodium azide: a POISONOUS AND HAZARDOUS SUBSTANCE which should be handled by trained staff only.
Storage:	4 °C,-20 °C
Storage Comment:	Store vial at 4° C prior to restoration. For extended storage aliquot contents and freeze at -20° C or below. Avoid cycles of freezing and thawing. Centrifuge product if not completely clear after standing at room temperature. This product is stable for several weeks at 4° C as an undiluted liquid. Dilute only prior to immediate use.
Expiry Date:	12 months

Images



Western Blotting

Image 1. Western Blot of Rabbit anti-Alpha Amylase Antibody Biotin Conjugated. Lane 1: Alpha Amylase solution. Load: 1/200 dilution of Alpha Amylase solution. Primary antibody: Alpha Amylase antibody at 1:1,000 overnight at 4°C. Secondary antibody: HRP Streptavidin secondary antibody at 1:40,000 for 30 min at RT. Block: ABIN925618 for 30 min at RT. Predicted/Observed size: 55 kDa, 55 kDa for Alpha Amylase. Other band(s): proteins within Alpha Amylase solution.