



[Go to Product page](#)

Datasheet for ABIN1607779

anti-Amylase beta antibody (Biotin)

1 Image

Overview

Quantity:	100 µg
Target:	Amylase beta (amyB)
Reactivity:	Sweet potato
Host:	Rabbit
Clonality:	Polyclonal
Conjugate:	This Amylase beta antibody is conjugated to Biotin
Application:	Western Blotting (WB), ELISA

Product Details

Immunogen:	Beta Amylase [Sweet Potato] Immunogen Type: Native Protein
Isotype:	IgG
Cross-Reactivity (Details):	Cross reactivity against b-Amylase from other sources may occur but have not been specifically determined.
Purity:	Anti-Beta Amylase is an IgG fraction antibody purified from monospecific antiserum by a multi-step process which includes delipidation, salt fractionation and ion exchange chromatography followed by extensive dialysis against the buffer stated above. Assay by immunoelectrophoresis resulted in a single precipitin arc against anti-Biotin, anti-Rabbit Serum as well as purified and partially purified b-Amylase [Sweet Potato].
Endotoxin Level:	Low Endotoxin : No

Target Details

Target:	Amylase beta (amyB)
Alternative Name:	BETA AMYLASE (amyB Products)
Background:	Anti-Beta Amylase antibody works through the hydrolysis of 1,4 alpha-D-glucosidic linkages in polysaccharides to remove successive maltose units from the non-reducing ends of the chains. Anti-Beta Amylase is often used in the structural analysis of starch and glycogen and is found in the cytoplasmic region. Anti-Beta Amylase antibody is ideal for researchers interested in Metabolism, Signal Transduction, and Cell Biology research. Synonyms: 1-4 alpha D glucan maltohydrolase antibody, 14 alpha D glucan maltohydrolase antibody, AMYB antibody, BMY1 antibody
UniProt:	P10537

Application Details

Application Notes:	Anti-Beta Amylase has been assayed against 1.0 µg of b-Amylase in a standard capture ELISA using Peroxidase Conjugated Streptavidin #S000-03 and ABTS (2,2'-azino-bis-[3-ethylbenthiiazoline-6-sulfonic acid]) code # ABTS-100 as a substrate for 30 minutes at room temperature. A working dilution of 1:4.000 to 1:20.000 of the reconstitution concentration is suggested for this product. ELISA Dilution: 1:5.000 - 1:25.000 Western Blot Dilution: 1:500 - 1:3.000
--------------------	--

Restrictions:	For Research Use only
---------------	-----------------------

Handling

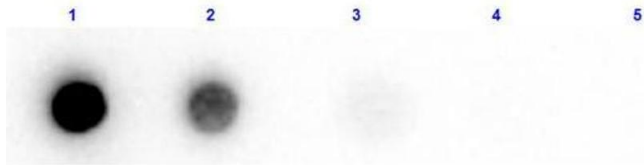
Format:	Liquid
Concentration:	10 mg/mL
Buffer:	0.02 M Potassium Phosphate, 0.15 M Sodium Chloride, pH 7.2 Stabilizer: 10 mg/mL Bovine Serum Albumin (BSA) - Immunoglobulin and Protease free
Handling Advice:	Store the vial at -20°C or below after dilution. Avoid cycles of freezing and thawing.
Storage:	-20 °C
Storage Comment:	Store vial at -20 °C or below prior to opening. This vial contains a relatively low volume of reagent (25 µL). To minimize loss of volume dilute 1:10 by adding 225 µL of the buffer stated above directly to the vial. Recap, mix thoroughly and briefly centrifuge to collect the volume at the bottom of the vial. Use this intermediate dilution when calculating final dilutions as

Handling

recommended below.

Expiry Date: Expiration date is one (1) year from date of opening.

Images



Dot Blot

Image 1. Dot Blot results of Rabbit Anti-Beta Amylase Biotin Conjugated. Antigen: Beta Amylase. Blot loaded at 3 fold dilution: 1. 100ng, 2. 33.3ng, 3. 11.1ng, 4. 3.70ng, 5. 1.23ng. Blocking: ABIN925618 Buffer for 30 minutes at RT. Primary Antibody: Rabbit Anti-Beta Amylase Biotin 1 μ g/mL for 1hr at RT. Secondary Antibody: Goat anti-Rabbit HRP at 1:70,000 for 30min at RT. Imaging System ChemiDoc, Filter used: Chemi.