

Datasheet for ABIN1607789
anti-GLUD1 antibody (Biotin)[Go to Product page](#)

1 Image

Overview

Quantity:	100 µg
Target:	GLUD1
Reactivity:	Cow
Host:	Rabbit
Clonality:	Polyclonal
Conjugate:	This GLUD1 antibody is conjugated to Biotin
Application:	Western Blotting (WB), ELISA, Immunoprecipitation (IP)

Product Details

Immunogen:	Glutamate Dehydrogenase [Bovine Liver] Immunogen Type: Native Protein
Isotype:	IgG
Cross-Reactivity (Details):	Cross reactivity against Glutamate Dehydrogenase from other sources may occur but have not been specifically determined.
Purity:	Anti-Glutamate Dehydrogenase is an IgG fraction antibody purified from monospecific antiserum by a multi-step process which includes delipidation, salt fractionation and ion exchange chromatography followed by extensive dialysis against the buffer stated above. Assay by immunoelectrophoresis resulted in a single precipitin arc against anti-Biotin, anti-Rabbit Serum as well as purified and partially purified Glutamate Dehydrogenase [Bovine Liver].
Endotoxin Level:	Low Endotoxin : No

Target Details

Target:	GLUD1
Alternative Name:	Glutamate Dehydrogenase (GLUD1 Products)
Background:	<p>Anti-glutamate dehydrogenase antibody recognizes the glutamate dehydrogenase protein. Glutamate dehydrogenase is an enzyme that is present in the mitochondria of eukaryotes. Glutamate dehydrogenase plays a role in urea synthesis by converting glutamate to α-ketoglutarate, and vice versa. Typically, the α-ketoglutarate to glutamate reaction does not occur in mammals as glutamate dehydrogenase equilibrium favours the production of ammonia and α-ketoglutarate. Glutamate dehydrogenase also has a very high affinity for ammonia. Therefore toxic levels of ammonia would have to be present in the body for the reverse reaction to proceed. In bacteria, the ammonia is assimilated to amino acids via glutamate and amidotransferases. In plants, the enzyme can work in either direction depending on environment and stress. Transgenic plants expressing microbial GLDHs are improved in tolerance to herbicide, water deficit, and pathogen infections. Anti-glutamate dehydrogenase antibody is suitable for researchers in Cell Biology and Immunology. Synonyms: Glutamate dehydrogenase 1, mitochondrial GDH 1 EC=1.4.1.3</p>
Gene ID:	281785, 32880221
UniProt:	P00366
Pathways:	Positive Regulation of Peptide Hormone Secretion , Warburg Effect

Application Details

Application Notes:	<p>Anti-Glutamate Dehydrogenase has been assayed against 1.0 μg of Glutamate Dehydrogenase in a standard capture ELISA using Peroxidase Conjugated Streptavidin #S000-03 and ABTS (2,2'-azino-bis-[3-ethylbenthiazoline-6-sulfonic acid]) code # ABTS-100 as a substrate for 30 minutes at room temperature. A working dilution of 1:4.000 to 1:20.000 of the reconstitution concentration is suggested for this product.</p> <p>ELISA Dilution: 1:5.000 - 1:20.000</p> <p>IF Immunoprecipitation Dilution: 1:100</p> <p>Western Blot Dilution: 1:500 - 1:5.000</p>
Restrictions:	For Research Use only

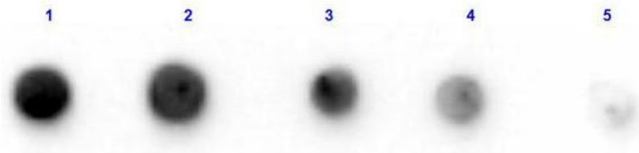
Handling

Format:	Liquid
---------	--------

Handling

Concentration:	10 mg/mL
Buffer:	0.02 M Potassium Phosphate, 0.15 M Sodium Chloride, pH 7.2 Stabilizer: 10 mg/mL Bovine Serum Albumin (BSA) - Immunoglobulin and Protease free
Handling Advice:	Store the vial at -20°C or below after dilution. Avoid cycles of freezing and thawing.
Storage:	-20 °C
Storage Comment:	Store vial at -20 °C or below prior to opening. This vial contains a relatively low volume of reagent (25 µL). To minimize loss of volume dilute 1:10 by adding 225 µL of the buffer stated above directly to the vial. Recap, mix thoroughly and briefly centrifuge to collect the volume at the bottom of the vial. Use this intermediate dilution when calculating final dilutions as recommended below.
Expiry Date:	Expiration date is one (1) year from date of opening.

Images



Dot Blot

Image 1. Dot Blot results of Rabbit Anti-Glutamate Dehydrogenase Biotin Conjugated. Antigen: Glutamate Dehydrogenase. Blot loaded at 3 fold dilution: 1. 100ng, 2. 33.3ng, 3. 11.1ng, 4. 3.70ng, 5. 1.23ng. Blocking: ABIN925618 Buffer for 30 minutes at RT. Primary Antibody: Rabbit Anti-Glutamate Dehydrogenase Biotin 1µg/mL for 1hr at RT. Secondary Antibody: Streptavidin-HRP (S000-03) at 1:40,000 for 30min at RT. Imaging System ChemiDoc, Filter used: Chemi.