

Datasheet for ABIN1607821
anti-RNASE1 antibody (Biotin)[Go to Product page](#)

1 Image

Overview

Quantity:	100 µg
Target:	RNASE1
Reactivity:	Cow
Host:	Rabbit
Clonality:	Polyclonal
Conjugate:	This RNASE1 antibody is conjugated to Biotin
Application:	Western Blotting (WB), ELISA, Immunoprecipitation (IP)

Product Details

Immunogen:	Ribonuclease A [Bovine Pancreas] Immunogen Type: Native Protein
Isotype:	IgG
Cross-Reactivity (Details):	Cross reactivity against Ribonuclease A from other sources may occur but have not been specifically determined.
Purity:	Anti-Ribonuclease A antibody is an IgG fraction antibody purified from monospecific antiserum by a multi-step process which includes delipidation, salt fractionation and ion exchange chromatography followed by extensive dialysis against the buffer stated above. Assay by immunoelectrophoresis resulted in a single precipitin arc against anti-Biotin, anti-Rabbit Serum as well as purified and partially purified Ribonuclease A [Bovine Pancreas].
Endotoxin Level:	Low Endotoxin : No

Target Details

Target:	RNASE1
Alternative Name:	Ribonuclease A (RNASE1 Products)
Background:	Anti-Ribonuclease A recognizes ribonuclease, an endoribonuclease that catalyzes the cleavage of the phosphodiester bond between 5'-ribose of a nucleotide and the phosphate group of a 3'-ribose of a pyrimidine nucleotide. Able to survive acidic and near boiling conditions, RNase A is highly stable. RNase A and its homologs have been demonstrated to have cytotoxic and cytostatic effects. Synonyms: Pancreatic ribonuclease antibody, Rib 1 antibody, Rib1 antibody, Ribonuclease a family 1 antibody, Ribonuclease pancreatic antibody, Ribonuclease RNase A family 1 antibody, Ribonuclease RNase A family 1 pancreatic antibody
Gene ID:	282340
UniProt:	P61823

Application Details

Application Notes:	<p>Anti-Ribonuclease A antibody has been assayed against 1.0 µg of Ribonuclease A in a standard capture ELISA using Peroxidase Conjugated Streptavidin #S000-03 and ABTS (2,2'-azino-bis-[3-ethylbenthiazoline-6-sulfonic acid]) code # ABTS-100 as a substrate for 30 minutes at room temperature. A working dilution of 1:3.000 to 1:13.000 of the reconstitution concentration is suggested for this product.</p> <p>ELISA Dilution: 1:5.000 - 1:20.000</p> <p>IF Immunoprecipitation Dilution: 1:100</p> <p>Western Blot Dilution: 1:500 - 1:5.000</p>
Restrictions:	For Research Use only

Handling

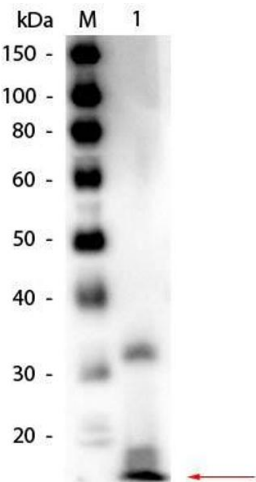
Format:	Liquid
Concentration:	10 mg/mL
Buffer:	0.02 M Potassium Phosphate, 0.15 M Sodium Chloride, pH 7.2 Stabilizer: 10 mg/mL Bovine Serum Albumin (BSA) - Immunoglobulin and Protease free
Handling Advice:	Store the vial at -20°C or below after dilution. Avoid cycles of freezing and thawing.
Storage:	-20 °C
Storage Comment:	Store vial at -20 °C or below prior to opening. This vial contains a relatively low volume of

Handling

reagent (25 µL). To minimize loss of volume dilute 1:10 by adding 225 µL of the buffer stated above directly to the vial. Recap, mix thoroughly and briefly centrifuge to collect the volume at the bottom of the vial. Use this intermediate dilution when calculating final dilutions as recommended below.

Expiry Date: Expiration date is one (1) year from date of opening.

Images



Western Blotting

Image 1. Western Blot of Rabbit anti-Ribonuclease A Antibody Biotin Conjugated. Lane 1: Ribonuclease A (Bovine Pancreas). Load: 50 ng per lane. Primary antibody: Rabbit anti-Ribonuclease A Antibody Biotin Conjugated at 1:1,000 overnight at 4°C. Secondary antibody: HRP streptavidin secondary antibody at 1:40,000 for 30 min at RT. Block: ABIN925618 for 30 min at RT. Predicted/Observed size: 16.5 kDa, 16.5 kDa for Ribonuclease A. Other band(s): Possible dimerization.