

Datasheet for ABIN1607851

anti-BSA antibody

2 Images

[Go to Product page](#)

Overview

Quantity:	100 µg
Target:	BSA
Reactivity:	Cow
Host:	Rabbit
Clonality:	Polyclonal
Application:	ELISA, Western Blotting (WB), Immunohistochemistry (IHC)

Product Details

Immunogen:	Anti-Bovine Serum Albumin antibody was produced by repeated immunizations with bovine serum albumin. Immunogen Type: Native Protein
Isotype:	IgG
Cross-Reactivity (Details):	Cross reactivity against Albumin from other tissues and species may occur but has not been specifically determined.
Purification:	Bovine Serum Albumin antibody is an IgG fraction antibody purified from monospecific antiserum by a multi-step process which includes delipidation, salt fractionation and ion exchange chromatography followed by extensive dialysis against the buffer stated above. Assay by immunoelectrophoresis resulted in a single precipitin arc against anti-Rabbit Serum as well as purified and partially purified Albumin (Bovine Serum).
Endotoxin Level:	Low Endotoxin : No

Target Details

Target:	BSA
Alternative Name:	Bovine Serum Albumin (BSA Products)
Background:	Bovine Serum Albumin antibody detects BSA. Serum albumin is the main protein of plasma. It has a good binding capacity for water, Ca ²⁺ , Na ⁺ , K ⁺ , fatty acids, hormones, bilirubin and drugs. Its main function is the regulation of the colloidal osmotic pressure of blood. ALB is the major zinc transporter in plasma, it typically binds about 80 % of all plasma zinc. BSA antibody is ideal for investigators involved in Cell Signaling, Neuroscience and Signal Transduction research. Synonyms: ALB antibody, Albumin antibody, Allergen Bos d 6 antibody, BSA antibody, DKFZp779N1935 antibody, Anti-BSA
Gene ID:	280717
UniProt:	P02769
Pathways:	Lipid Metabolism

Application Details

Application Notes:	Anti-ALB antibody is suitable for immunoblotting (western or dot blot), ELISA, immunoprecipitation, conjugation and most immunological methods requiring high titer and specificity. ELISA Dilution: 1:20.000 - 1:100.000 Immunohistochemistry Dilution: 1:1.000 - 1:5.000 Western Blot Dilution: 1:2.000-1:10.000
Restrictions:	For Research Use only

Handling

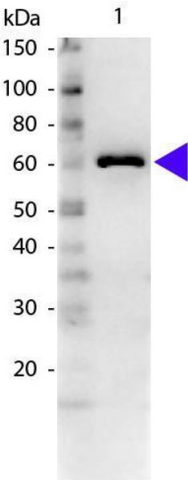
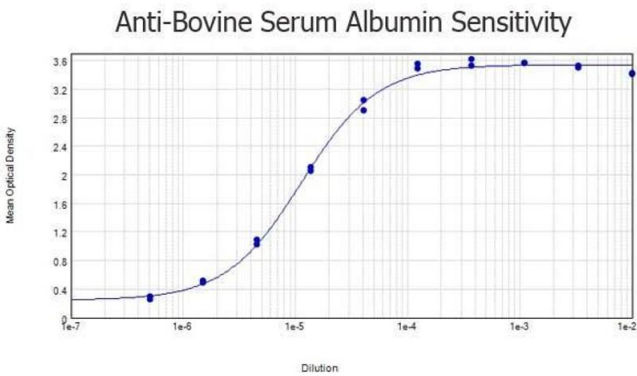
Format:	Lyophilized
Reconstitution:	Restore with 100 µL deionized water (or equivalent)
Concentration:	1 mg/mL
Buffer:	0.02 M Potassium Phosphate, 0.15 M Sodium Chloride, pH 7.2
Storage:	4 °C/-20 °C
Storage Comment:	Store vial at 4 °C prior to restoration. For extended storage aliquot contents and freeze at -20 °C or below. Avoid cycles of freezing and thawing. Centrifuge product if not completely clear after standing at room temperature. This product is stable for several weeks at 4 °C as an undiluted

Handling

liquid. Dilute only prior to immediate use.

Expiry Date: Expiration date is one (1) year from date of opening.

Images



ELISA

Image 1. ELISA results of purified Rabbit anti-Bovine Serum Albumin Antibody tested against Bovine Serum Albumin. Each well was coated in duplicate with 1.0 µg of the antigen. The starting dilution of antibody was 5µg/ml and the X-axis represents the Log10 of a 3-fold dilution. This titration is a 4-parameter curve fit where the IC50 is defined as the titer of the antibody. Assay performed using 3% fish gel, Goat anti-Rabbit IgG Antibody Peroxidase Conjugated (Min X Bv Ch Gt GP Ham Hs Hu Ms Rt & Sh Serum Proteins) and TMB ELISA Peroxidase Substrate .

Western Blotting

Image 2. Western blot of Rabbit Anti-Bovine Serum Albumin secondary antibody. Lane 1: BSA. Lane 2: None. Load: 50 ng per lane. Primary antibody: BSA antibody at 1:1,000 overnight at 4°C. Secondary antibody: Peroxidase rabbit secondary antibody at 1:40,000 for 30 min at RT. Blocking: 5% Goat Serum for 30 min at RT. Predicted/Observed size: 66 kDa, 61 kDa for BSA. Other band(s): None.