



[Go to Product page](#)

Datasheet for ABIN1607857

## Mouse anti-Human IgM (Fc5mu Region) Antibody

### 1 Image

#### Overview

Quantity:	100 µg
Target:	IgM
Binding Specificity:	Fc5mu Region
Reactivity:	Human
Host:	Mouse
Clonality:	Monoclonal
Application:	ELISA, Western Blotting (WB)

#### Product Details

Immunogen:	Immunogen: Anti-Human IgM Fc5mu was produced by repeated immunization with Human IgM Fc5mu fragment in mice. Immunogen Type: Native Protein
Clone:	22G1-H8
Isotype:	IgG2b kappa
Specificity:	IgM Fc5µ
Cross-Reactivity:	Human
Purification:	Anti-Human IgM Fc5µ Antibody was prepared from concentrated roller bottle supernatant by Protein A chromatography sepharose beads. Assay by immunoelectrophoresis resulted in a single precipitin arc against anti-Mouse Serum, Human IgM, Human Serum and Human Fc5µ. No reaction was observed against Human IgG, Human IgA, Human Fc, Human Fab or Human Fab2.

## Target Details

---

Target:	IgM
Abstract:	<a href="#">IgM Products</a>
Target Type:	Antibody
Background:	<p>Synonyms: mouse anti-Human IgM Fc5<math>\mu</math> Antibody, Human IgM Fc5u Antibody, Ms-a-Human IgM Fc5<math>\mu</math> Antibody, Human IgM Fc5<math>\mu</math> Antibody in Mouse, Human M Fc5<math>\mu</math> Secondary Antibody</p> <p>Background: Anti-Human IgM Fc5<math>\mu</math> antibody generated in mice specifically detects Fc5<math>\mu</math> portion of the human IgM heavy chain. Immunoglobulin M is the largest antibody isotype and the first to be secreted against an initial exposure to antigen. IgM is predominantly produced in the spleen. Formed from covalently linking 5 immunoglobulins together. Due to this large size, IgM is typically isolated to the serum. Anti-Human IgM Fc5<math>\mu</math> antibody is ideal for investigators in Immunology, Microbiology, and Cell Biology.</p>

## Application Details

---

Application Notes:	<p>Application Note: Human IgM Fc5<math>\mu</math> antibody is suitable for immunoblotting (western or dot blot), ELISA, and immunohistochemistry requiring extremely low background levels, lot-to-lot consistency, high titer and specificity.</p> <p>ELISA Dilution: 1:1000-1:10000</p> <p>Western Blot Dilution: 1:1000-1:2000</p>
--------------------	----------------------------------------------------------------------------------------------------------------------------------------------------------------------------------------------------------------------------------------------------------------------------------------------------------------------------------------

Restrictions:	For Research Use only
---------------	-----------------------

## Handling

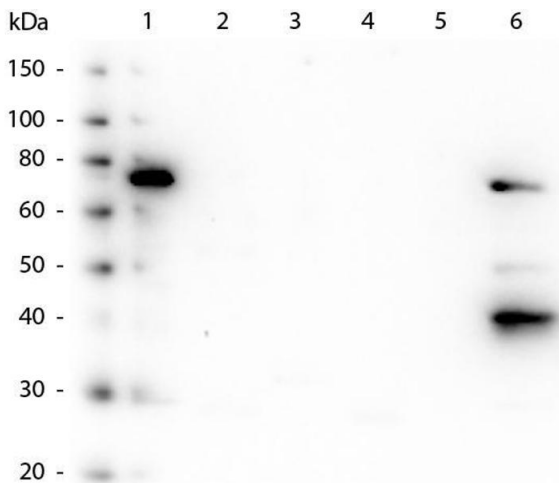
---

Format:	Liquid
Concentration:	1.0 mg/mL
Buffer:	<p>Buffer: 0.02 M Potassium Phosphate, 0.15 M Sodium Chloride, pH 7.2</p> <p>Stabilizer: None</p> <p>Preservative: 0.01 % (w/v) Sodium Azide</p>
Preservative:	Sodium azide
Precaution of Use:	This product contains Sodium azide: a POISONOUS AND HAZARDOUS SUBSTANCE which should be handled by trained staff only.
Handling Advice:	<p>Avoid cycles of freezing and thawing.</p> <p>Centrifuge product if not completely clear after standing at room temperature.</p>

## Handling

Storage:	RT,4 °C,-20 °C
Storage Comment:	Store vial at -20 °C prior to opening. Aliquot contents and freeze at -20 °C or below for extended storage. This product is stable for several weeks at 4 °C as an undiluted liquid.
Expiry Date:	12 months

## Images



### Western Blotting

**Image 1.** Western Blot of Mouse anti-Human IgM Fc5μ antibody. Lane 1: Human IgM. Lane 2: Human IgG. Lane 3: Human Fc. Lane 4: Human Fab. Lane 5: Human Fab2. Lane 6: Human IgM Fc5μ. Load: 50 ng per lane. Primary antibody: Human IgM Fc5μ monoclonal antibody at 1:1000 for overnight at 4 degrees C. Secondary antibody: Peroxidase mouse secondary antibody at 1:40,000 for 30 min at RT. Block: ABIN925618 for 30 min at RT. Predicated/Observed size: 78 kDA, 78 kDa for Human IgM.