

Datasheet for ABIN1607862

**anti-IL-22 antibody**[Go to Product page](#)**1** Image

## Overview

Quantity:	100 µg
Target:	IL-22 (IL22)
Reactivity:	Human
Host:	Rabbit
Clonality:	Polyclonal
Application:	Western Blotting (WB), ELISA

## Product Details

Immunogen:	Anti-IL-22 antibody was prepared from rabbit antiserum after repeated immunizations with a truncated form of recombinant human IL-22 protein from E. coli. Immunogen Type: Recombinant Protein
Isotype:	IgG
Cross-Reactivity (Details):	Cross reactivity with IL-22 from other sources has not been determined.
Purity:	Anti-IL-22 is an IgG fraction antibody purified from monospecific antiserum by a multi-step process which includes delipidation, salt fractionation and ion exchange chromatography followed by extensive dialysis against the buffer stated above. This antibody is specific for human IL-22 protein. A BLAST analysis was used to suggest cross-reactivity with IL-22 from human sources based on 100 % homology with the immunizing sequence.
Endotoxin Level:	Low Endotoxin : No

## Target Details

Target:	IL-22 (IL22)
Alternative Name:	IL-22 ( <a href="#">IL22 Products</a> )
Background:	<p>Interleukin-22 (IL-22) is a member of a group of cytokines called IL-10 family member, produced by activated dendritic cells and T lymphocytes. IL-22 inhibits IL-4 production by Th2 cells, and induces acute phase reactants in the liver and pancreas. IL-22 signals via the IL-22R and IL-10R<math>\beta</math> receptors to act as a potent mediator of the cellular inflammatory response.</p> <p>Recombinant human IL-22 is a non-disulfide-linked homodimer with a total molecular weight of 33.6 kDa. Anti-IL-22 antibody is ideal for researchers interested in cytokines and stem cell research. Synonyms: Interleukin-22, ILTIF, ZCYTO18, IL22, Cytokine Zcyto18, IL-10-related T-cell-derived-inducible factor</p>
Gene ID:	50616
NCBI Accession:	<a href="#">NP_065386</a>
UniProt:	<a href="#">Q9GZX6</a>

## Application Details

Application Notes:	<p>IL-22 purified antibody has been tested for use in ELISA and western blotting. Specific conditions for reactivity should be optimized by the end user. Expect a band approximately 20 kDa in size corresponding to the human IL-22 protein by western blotting in appropriate cell lysate or extract.</p> <p>ELISA Dilution: 1:20.000 - 1:50.000</p> <p>Western Blot Dilution: 1:1000-1:2000</p>
Restrictions:	For Research Use only

## Handling

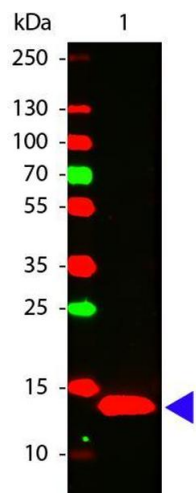
Format:	Liquid
Concentration:	1 mg/mL
Buffer:	0.02 M Potassium Phosphate, 0.15 M Sodium Chloride, pH 7.2
Storage:	4 °C/-20 °C
Storage Comment:	Store vial at -20 °C prior to opening. Aliquot contents and freeze at -20 °C or below for extended storage. Avoid cycles of freezing and thawing. Centrifuge product if not completely clear after standing at room temperature. This product is stable for several weeks at 4 °C as an undiluted

Handling

liquid. Dilute only prior to immediate use.

Expiry Date:                      Expiration date is one (1) year from date of opening.

Images



Western Blotting

**Image 1.** Western Blot of Rabbit anti-IL-22 antibody. Lane 1: Human IL-22 Recombinant Protein. Lane 2: None. Load: 50 ng per lane. Primary antibody: IL-22 antibody at 1:1,000 for overnight at 4°C. Secondary antibody: 649 rabbit secondary antibody at 1:20,000 for 30 min at RT. Block: ABIN925618 for 30 min at RT. Predicted/Observed size: 14 kDa, 14 kDa for Human IL-22. Other band(s): None.