



[Go to Product page](#)

Datasheet for ABIN1607901
anti-RFP antibody (Biotin)

2 Images

1 Publication

Overview

Quantity:	100 µg
Target:	RFP
Reactivity:	Discosoma
Host:	Chicken
Clonality:	Polyclonal
Conjugate:	This RFP antibody is conjugated to Biotin
Application:	Western Blotting (WB), ELISA

Product Details

Purpose:	Anti-RFP is designed to detect recombinant RFP.
Immunogen:	The immunogen is a Red Fluorescent Protein (RFP) fusion protein corresponding to the full length amino acid sequence (234aa) derived from the mushroom polyp coral Discosoma. Immunogen Type: Recombinant Protein
Purification:	RFP Antibody was prepared from egg yolks by a multi-step process which includes filtration, delipidation, salt fractionation and extensive dialysis against the buffer stated above. RFP Antibody was tested by ELISA, western blot and immunoelectrophoresis.

Target Details

Target:	RFP
Abstract:	RFP Products
Background:	Antibodies to RFP (Discosoma spp.) are intended for use in immunological assays including

Target Details

ELISA, western blotting, fluorometry and fluorescence activated cell sorting (FACS). Synonyms: DsRed, rDsRed, Discosoma sp. Red Fluorescent Protein, Red fluorescent protein drFP583

Gene ID: 55976617

UniProt: [Q9U6Y8](#)

Application Details

Application Notes: Anti-RFP is designed to detect recombinant RFP. This antibody can be used to detect RFP by ELISA (sandwich or capture) for the direct binding of antigen. For immunoblotting use either alkaline phosphatase or peroxidase conjugated polyclonal anti-RFP to detect RFP or RFP containing proteins on western blots. Optimal titers for applications should be determined by the researcher. This product shows optimal performance by western blot.

ELISA Dilution: 1:10.000

Western Blot Dilution: 1:1.000 - 1:3.000

Restrictions: For Research Use only

Handling

Format: Lyophilized

Reconstitution: Restore with 100 µL deionized water (or equivalent)

Concentration: 1 mg/mL

Buffer: 0.02 M Potassium Phosphate, 0.15 M Sodium Chloride, pH 7.2

Stabilizer: 10 mg/mL Bovine Serum Albumin (BSA) - Immunoglobulin and Protease free

Storage: 4 °C/-20 °C

Storage Comment: Store vial at 4 °C prior to restoration. For extended storage aliquot contents and freeze at -20 °C or below. Avoid cycles of freezing and thawing. Centrifuge product if not completely clear after standing at room temperature. This product is stable for several weeks at 4 °C as an undiluted liquid. Dilute only prior to immediate use.

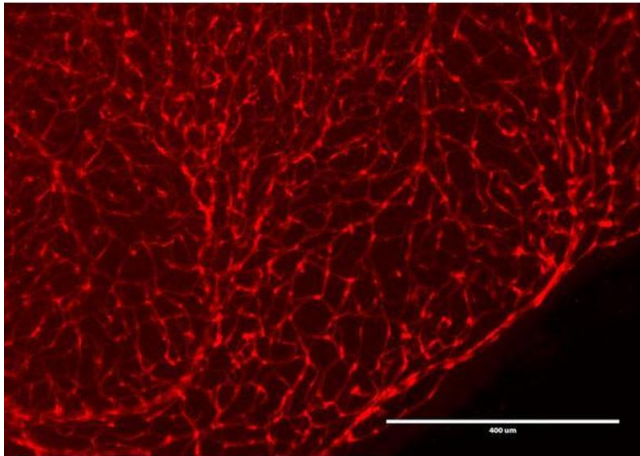
Expiry Date: Expiration date is one (1) year from date of opening.

Publications

Product cited in: Jo, Xu, Deniz, Cherian, DeVries, Zhu: "Intersectional Strategies for Targeting Amacrine and Ganglion Cell Types in the Mouse Retina." in: **Frontiers in neural circuits**, Vol. 12, pp. 66, (2019)

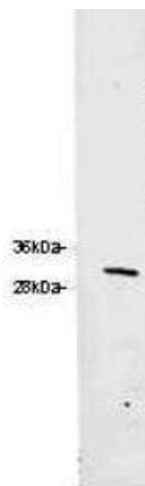
(PubMed).

Images



Immunofluorescence

Image 1. Immunofluorescence Microscopy of Chicken Anti-RFP antibody. Tissue: DsRed transgenic mouse retina. Fixation: 4% PFA. Blocking: 3% BSA, 0.3% Triton Primary antibody: RFP antibody at 1:100 for 12 h at 4°C. Secondary antibody: Alexa488 secondary antibody at 1:10,000 for 4 hours at RT. Localization: RFP is nuclear and occasionally cytoplasmic. Staining: labeled in red.



Western Blotting

Image 2. Western blot of Anti-RFP Antibody. 0.1 μg of RFP was loaded on a 4-20% gel and transferred to nitrocellulose membrane. Anti-RFP Antibody was added at 1.0 μg/mL at RT for 2 hours. anti-Chicken was added at 1:20,000 at RT for 45 minutes.