

Datasheet for ABIN1607915

Chemiluminescent Western Blot Kit for detection of E.coli Host Cell Proteins (HCP)

[Go to Product page](#)

2 Images

Overview

Quantity:	1 kit
Reactivity:	E. coli
Application:	Western Blotting (WB)

Product Details

Target Details

Background: Host Cell Proteins are process-related impurities derived from a host cell expression system that may be present in trace amounts in a final drug substance. HCP Antibodies are used to detect impurities in biologically-based therapeutics. The antibody provided in this kit recognizes high and low molecular weight protein fractions from E.coli. This antibody has been validated by 2D electrophoresis western blot to assure highest possible coverage of E.coli HCP. Detecting impurities often unseen by 1-D electrophoresis, a 2D electrophoresis western blot analysis delivers more complete insight into the immunocoverage of protein components of the host cell lysate. The Anti-Host Cell Proteins Antibody provided in this kit detects over 300 E.coli proteins and is suitable for western blotting. Synonyms: Western Blotting Kit, Chemiluminescent Kit, Peroxidase Kit, Immunoblotting Kit, HCP, Host Cell Protein detection, HCP contaminants detection, ECP, ECP detection, ECP contaminants

Application Details

Application Notes: Use Chemiluminescent Western Blot Kit for detection of E.coli Host Cell Proteins. This kit is useful for both "Western blotting" and "dot blotting" methods. After protein separation and transfer, the membrane is probed with Anti-Host Cell Proteins Antibody. Detection of the

Application Details

membrane bound antibody-antigen complex is achieved by the addition of a secondary antibody conjugated to the enzyme horseradish peroxidase. The enzyme reacts with a specialized formulation of luminol, an extremely sensitive, non-radioactive substrate that emits light and allows visualization using X-ray film or other imaging methods, including highly sensitive CCD cameras and imaging systems.

Restrictions: For Research Use only

Handling

Storage: 4 °C

Storage Comment: See kit insert for complete instructions.

Expiry Date: See kit insert for complete instructions.

Images

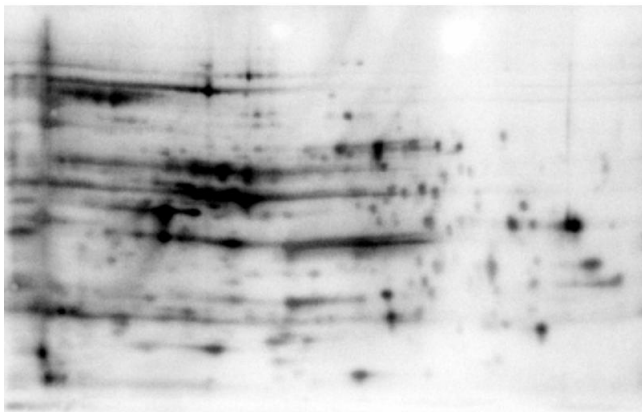
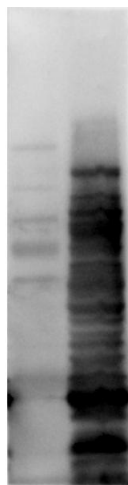


Image 1. 2D Western Blot of E.coli HCP Control Protein. Load: 35 µg Total HCP. pH: 5-8. Exposure: 2.4s. Primary antibody: Rabbit anti-HCP antibody at 1:50 for overnight at 4°C. Secondary antibody: Goat anti-rabbit secondary antibody at 1:10,000 for 30 min at RT. Block: ABIN925618 for 1 hour at RT.



Western Blotting

Image 2. Western Blot of Rabbit anti-HCP antibody. Lane 1: Molecular Weight. Lane 2: Total HCP. Load: 10µg per lane. Primary antibody: Rabbit anti-HCP cocktail at 1:50 for overnight at 4°C. Secondary antibody: Goat anti-rabbit secondary antibody at 1:10,000 for 30 min at RT. Block: ABIN925618 for 1 hour at RT.