



[Go to Product page](#)

Datasheet for ABIN1607929

ProXtract B™ Extraction Buffer

2 Images

Overview

Quantity:	100 mL
Application:	Western Blotting (WB)

Product Details

Brand:	ProXtract B™
Characteristics:	ProXtract B™ is ready-to-use as a working 1X solution and requires no further dilution. This buffer can be stored and used at room temperature. ProXtract B™ Extraction Buffer is gentle and has a high efficiency of protein recovery. It is compatible with chelating agents, reducing agents, protease inhibitors, cocktail inhibitors and chaotropic salts. There is no interference with downstream purification processes. Other applications may require detergents or other additional components. Synonyms: ProXtract B™ Extraction Buffer, Protein Extraction Buffer, Bacterial Protein Extraction Reagent, Bacterial Cell Lysis Buffer
Endotoxin Level:	Low Endotoxin : No

Application Details

Application Notes:	ProXtract B™ Buffer is suitable for protein extraction and easily scalable. After protein induction, bacterial cells are pelleted by ultracentrifugation at 4000 rpm during 10 minutes at 4°C. The cell pellet is resuspended with ProXtract buffer (usually 20-30 ml per gram of wet cells) with incubation at least 20 mins on an orbital shaker at 18-26°C. Centrifugation is then done at 12000 rpm for 20 minutes at 4°C. The supernatant contains solubilized proteins and is ready to be analyzed by SDS-PAGE, Western-Blot or purified through downstream purification processes.
--------------------	-------------------------------------------------------------------------------------------------------------------------------------------------------------------------------------------------------------------------------------------------------------------------------------------------------------------------------------------------------------------------------------------------------------------------------------------------------------------------------------------------------------------------------------------------------------------------------------------

Western Blot Dilution: 2-5µl

Application Details

Comment: ProXtract B Extraction Buffer was aseptically filtered through a Millipore 0.22 micron filter into clean, pre-sterilized containers. The product was tested on trypticase soy agar for 24 hours, 48 hours and 72 hours and was found to be negative for bacteria.

Restrictions: For Research Use only

Handling

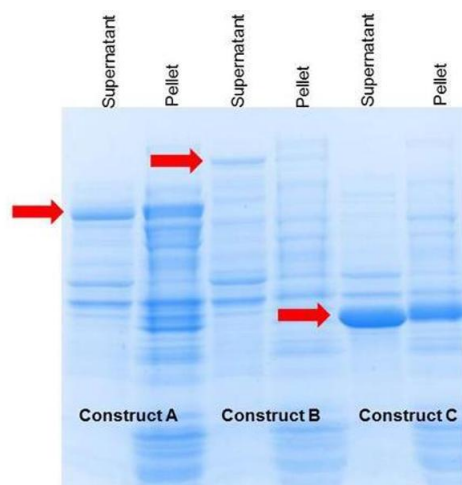
Format: Liquid

Storage: 4 °C

Storage Comment: Store container at room temperature (18 °C to 26 °C) prior to opening. If desired, the solution may be stored at 4 °C or less. Some salts may precipitate out of solution at lower temperature. Allow buffer to equilibrate to room temperature (18 °C to 26 °C) to restore solubility of some salts.

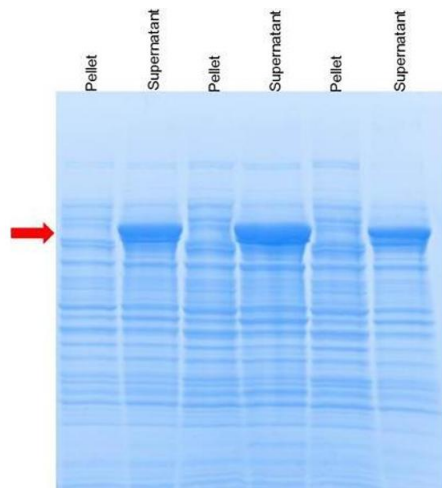
Expiry Date: Expiration date is six (6) months from date of opening.

Images



SDS-PAGE

Image 1. SDS-PAGE of Construct A, B and C plasmids transformed in E.Coli BL21 strains. After overexpression, cells were pelleted by centrifugation at 5000 rpm for 10 mins. Protein extraction was performed with ProXtract buffer for 20 mins at RT. Centrifugation is then done at 12000 rpm for 20 minutes at 4°C. Lane 1: Supernatant of Construct A. Lane 2: Pellet from Construct A. Lane 3: Supernatant of Construct B. Lane 4: Pellet from Construct B. Lane 5: Supernatant of Construct C. Lane 6: Pellet from Construct C.



SDS-PAGE

Image 2. SDS-PAGE of recombinant protein D/ pGEX-2T plasmid transformed in Rosetta strain. Cells were plated on LB Cam-Amp, grown, and induced with IPTG. Cells were pelleted by centrifugation at 5000 rpm for 10 mins. Protein extraction was performed with ProXtract buffer for 20 mins at RT. Centrifugation is then done at 12000 rpm for 20 minutes at 4°C. Lane 1: Pellet from 1h. Lane 2: Supernatant of 1h. Lane 3: Pellet from 2h. Lane 4: Supernatant of 2h. Lane 5: Pellet from 3h. Lane 6: Supernatant of 3h.