

Datasheet for ABIN1607976

RPL27 Protein (AA 2-136, full length) (GST tag)[Go to Product page](#)**1** Image

Overview

Quantity:	1 mg
Target:	RPL27
Protein Characteristics:	AA 2-136, full length
Origin:	Human
Source:	Escherichia coli (E. coli)
Protein Type:	Recombinant
Purification tag / Conjugate:	This RPL27 protein is labelled with GST tag.
Application:	ELISA

Product Details

Sequence:	GKFMKPGKV LVLAGRYSGR KAVIVKNIDD GTSDRPYSHA LVAGIDRYPR KVTAAMGKKK IAKRSKIKSF VKVYNYNHLM PTRYSVDIPL DKTVVNKDVF RDPALKRKAR REAKVKFEER YKTGKNKWFF QKLRF
Characteristics:	Please inquire if you are interested in this recombinant protein expressed in E. coli, mammalian cells or by baculovirus infection. Be aware about differences in price and lead time.
Purity:	95 %

Target Details

Target:	RPL27
Alternative Name:	60S ribosomal protein L27 protein (RPL27 Products)
Background:	Belongs to the ribosomal protein L27e family

Target Details

Molecular Weight: 43.1 kD

UniProt: [P61353](#)

Application Details

Comment: The yeast protein expression system is the most economical and efficient eukaryotic system for secretion and intracellular expression. A protein expressed by the mammalian cell system is of very high-quality and close to the natural protein. But the low expression level, the high cost of medium and the culture conditions restrict the promotion of mammalian cell expression systems. The yeast protein expression system serve as a eukaryotic system integrate the advantages of the mammalian cell expression system. A protein expressed by yeast system could be modified such as glycosylation, acylation, phosphorylation and so on to ensure the native protein conformation. It can be used to produce protein material with high added value that is very close to the natural protein. Our proteins produced by yeast expression system has been used as raw materials for downstream preparation of monoclonal antibodies.

Restrictions: For Research Use only

Handling

Format: Lyophilized

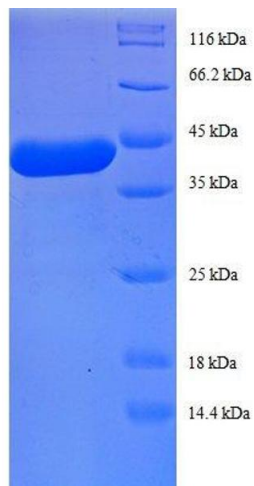
Concentration: 0.2-2 mg/mL

Buffer: Tris-based buffer, 50 % glycerol

Handling Advice: Repeated freezing and thawing is not recommended. Store working aliquots at 4 °C for up to one week

Storage: -20 °C

Storage Comment: Store at -20 °C for extended storage, conserve at -20 °C or -80 °C



SDS-PAGE

Image 1. Ribosomal Protein L27 (RPL27) (AA 2-136), (full length) protein (GST tag)