



[Go to Product page](#)

Datasheet for ABIN1607978

RPL38 Protein (AA 2-70) (GST tag)

1 Image

Overview

Quantity:	1 mg
Target:	RPL38
Protein Characteristics:	AA 2-70
Origin:	Human
Source:	Escherichia coli (E. coli)
Protein Type:	Recombinant
Purification tag / Conjugate:	This RPL38 protein is labelled with GST tag.
Application:	ELISA

Product Details

Sequence:	PRKIEEIKDF LLTARRKDAK SVKIKKNKDN VKFKVRCSTRY LYTLVITDKE KAECLKQSLP PGLAVKELK
Characteristics:	Please inquire if you are interested in this recombinant protein expressed in E. coli, mammalian cells or by baculovirus infection. Be aware about differences in price and lead time.
Purity:	95 %

Target Details

Target:	RPL38
Alternative Name:	60S ribosomal protein L38 protein (RPL38 Products)
Background:	Belongs to the ribosomal protein L38e family.

Target Details

Molecular Weight:	35.5 kD
UniProt:	P63173
Pathways:	Sensory Perception of Sound , Ribonucleoprotein Complex Subunit Organization , Ribosome Assembly

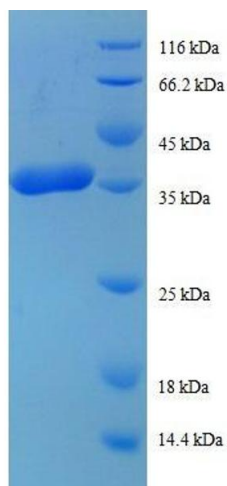
Application Details

Comment: The yeast protein expression system is the most economical and efficient eukaryotic system for secretion and intracellular expression. A protein expressed by the mammalian cell system is of very high-quality and close to the natural protein. But the low expression level, the high cost of medium and the culture conditions restrict the promotion of mammalian cell expression systems. The yeast protein expression system serve as a eukaryotic system integrate the advantages of the mammalian cell expression system. A protein expressed by yeast system could be modified such as glycosylation, acylation, phosphorylation and so on to ensure the native protein conformation. It can be used to produce protein material with high added value that is very close to the natural protein. Our proteins produced by yeast expression system has been used as raw materials for downstream preparation of monoclonal antibodies.

Restrictions: For Research Use only

Handling

Format:	Lyophilized
Concentration:	0.2-2 mg/mL
Buffer:	Tris-based buffer, 50 % glycerol
Handling Advice:	Repeated freezing and thawing is not recommended. Store working aliquots at 4 °C for up to one week
Storage:	-20 °C
Storage Comment:	Store at -20 °C for extended storage, conserve at -20 °C or -80 °C



SDS-PAGE

Image 1. Ribosomal Protein L38 (RPL38) (AA 2-70) protein (GST tag)