

Datasheet for ABIN161238

anti-CR1L antibody**2** Images[Go to Product page](#)

Overview

Quantity:	250 µg
Target:	CR1L
Reactivity:	Rat
Host:	Mouse
Clonality:	Monoclonal
Conjugate:	This CR1L antibody is un-conjugated
Application:	Immunohistochemistry (Frozen Sections) (IHC (fro)), Flow Cytometry (FACS)

Product Details

Immunogen:	Erythrocytes from a C3 mutated rat
Clone:	5I2
Isotype:	IgG1
Specificity:	Rat Crry
Purification:	Purified

Target Details

Target:	CR1L
Alternative Name:	Crry (CR1L Products)
Background:	Crry antibody (Clone: 5I2) is a rat-specific membrane complement regulator that can inhibit both antibody-induced classical pathway and alternative pathway complement activation. Crry

Target Details

plays a more dominant role than DAF in regulating the alternative pathw

Pathways: [Complement System](#)

Application Details

Restrictions: For Research Use only

Handling

Concentration: 1.0 mg/ml

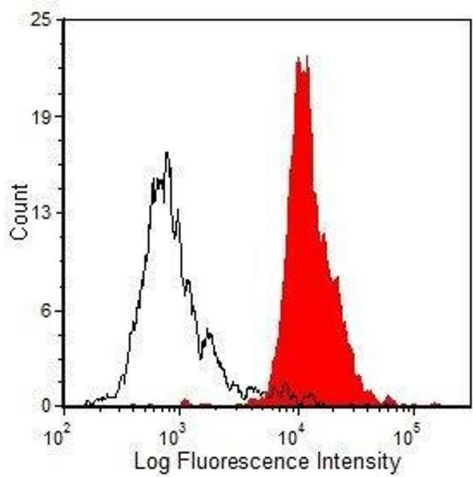
Buffer: Purified IgG buffered in PBS and 0.02% NaN . (Purified from ascites fluid via Protein G Chromatography).

Preservative: Sodium azide

Precaution of Use: This product contains sodium azide: a POISONOUS AND HAZARDOUS SUBSTANCE which should be handled by trained staff only.

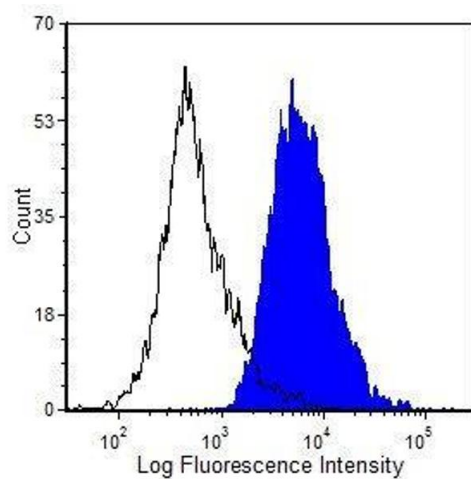
Storage: 4 °C

Images



Flow Cytometry

Image 1. Wistar rat splenocytes (left) and bone marrow (right) were stained with anti-Crry (clone: 5I2) (filled histogram) or mouse IgG2a isotype control (open histogram).



Flow Cytometry

Image 2. Wistar rat splenocytes (left) and bone marrow (right) were stained with anti-Crry (clone: 5I2) (filled histogram) or mouse IgG2a isotype control (open histogram).