

Datasheet for ABIN1633737
Caprin-1 Protein (AA 2-707) (His tag)



[Go to Product page](#)

1 Image

Overview

| | |
|-------------------------------|---|
| Quantity: | 1 mg |
| Target: | Caprin-1 |
| Protein Characteristics: | AA 2-707 |
| Origin: | Rat |
| Source: | Yeast |
| Protein Type: | Recombinant |
| Purification tag / Conjugate: | This Caprin-1 protein is labelled with His tag. |
| Application: | ELISA |

Product Details

Sequence: PSATSHSGS GSKSSGPPPP SGSSGSEAAA GAAAPASQHP ATGTGAVQTE AMKQILGVID
KKLRNLEKKK GKLLDDYQERM NKGRLNODQ LDAVSKYQEV TNNLEFAKEL QRSFMALSQD
IQKTIKKTAR REQLMREEAE QKRLKTVLEL QYVLDKLGDD DVRTDLKQGL SGVPILSEEE
LSSLDEFYKL VDPERDMSLR LNEQYEHASI HLWDLLEGKE KPVCGETTYKA LKEIVERVFQ
SNYFDSTHMH QNGLCEEEEA ASAPIVEDQV AEAPEPEPTEE YTEQSEVEST EYVNRQFMAE
TQFSSGEKEQ VDEWAVETVE VVNSLQQQPQ AASPSVPEPH SLTPVAQSDP LVRRQRVQDL
MAQMGGPYNF IQDSMLDFEN QTLDPAIVSA QPMNPTQNMD MPQLVCPQVH SESRLAQSNO
VPVQPEATQV PLVSSTSEGY TASQPLYQPS HAAEQRPQKE PIDQIQATIS LNTEQTTASS
SLPAASQPQV FQAGASKPLH SSGINVNAAP FQSMQTVFNM NAPVPPVNEP ETLKQSSQYQ
ASYNQSFSSQ PHQVEQTELQ QDQLQTVVGT YHGSQDQPHQ VPGNHQQPPQ QSTGFPRSSQ
PYYNSRGVSR GSGRGARGLM NGYRGPANGF RGGYDGYRSS FSNTPNSTGYT QSQFNAPRDY
SGYQRDGYQQ NFKRGSQSG PRGAPRGRGG PPRPNRGMPQ MNTQQVN

Product Details

| | |
|------------------|--|
| Specificity: | Rattus norvegicus (Rat) |
| Characteristics: | Please inquire if you are interested in this recombinant protein expressed in E. coli, mammalian cells or by baculovirus infection. Be aware about differences in price and lead time. |
| Purity: | > 90 % |

Target Details

| | |
|-------------------|---|
| Target: | Caprin-1 |
| Alternative Name: | Caprin-1 (Caprin1) (Caprin-1 Products) |
| Background: | Recommended name: Caprin-1. Alternative name(s): Cytoplasmic activation- and proliferation-associated protein 1 GPI-anchored protein p137. Short name= GPI-p137. Short name= p137GPI RNA granule protein 105 |
| UniProt: | Q5M9G3 |

Application Details

| | |
|----------|--|
| Comment: | The yeast protein expression system is the most economical and efficient eukaryotic system for secretion and intracellular expression. A protein expressed by the mammalian cell system is of very high-quality and close to the natural protein. But the low expression level, the high cost of medium and the culture conditions restrict the promotion of mammalian cell expression systems. The yeast protein expression system serve as a eukaryotic system integrate the advantages of the mammalian cell expression system. A protein expressed by yeast system could be modified such as glycosylation, acylation, phosphorylation and so on to ensure the native protein conformation. It can be used to produce protein material with high added value that is very close to the natural protein. Our proteins produced by yeast expression system has been used as raw materials for downstream preparation of monoclonal antibodies. |
|----------|--|

| | |
|---------------|-----------------------|
| Restrictions: | For Research Use only |
|---------------|-----------------------|

Handling

| | |
|----------------|----------------------------------|
| Format: | Lyophilized |
| Concentration: | 0.2-2 mg/mL |
| Buffer: | Tris-based buffer, 50 % glycerol |

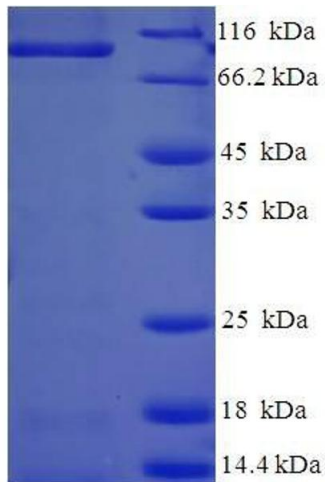
Handling

Handling Advice: Repeated freezing and thawing is not recommended. Store working aliquots at 4 °C for up to one week

Storage: -20 °C

Storage Comment: Store at -20 °C, for extended storage, conserve at -20 °C or -80 °C.

Images



SDS-PAGE

Image 1. Caprin-1 (AA 2-707) protein (His tag) expressed in *E. coli*