



[Go to Product page](#)

Datasheet for ABIN165305
anti-Zonulin antibody

1 Image

Overview

Quantity:	100 µL
Target:	Zonulin
Reactivity:	Human
Host:	Rabbit
Clonality:	Polyclonal
Conjugate:	This Zonulin antibody is un-conjugated
Application:	ELISA, Immunohistochemistry (IHC), Enzyme Immunoassay (EIA), Immunohistochemistry (Frozen Sections) (IHC (fro)), Immunohistochemistry (Paraffin-embedded Sections) (IHC (p))

Product Details

Immunogen:	Synthetic Zonulin Peptide (GGVLVQPG) KLH-conjugated
Specificity:	Human Zonulin

Target Details

Target:	Zonulin
Alternative Name:	Zonulin (Zonulin Products)
Background:	Serum

Application Details

Application Notes:	ELISA 1:10.000
--------------------	----------------

Application Details

Restrictions: For Research Use only

Handling

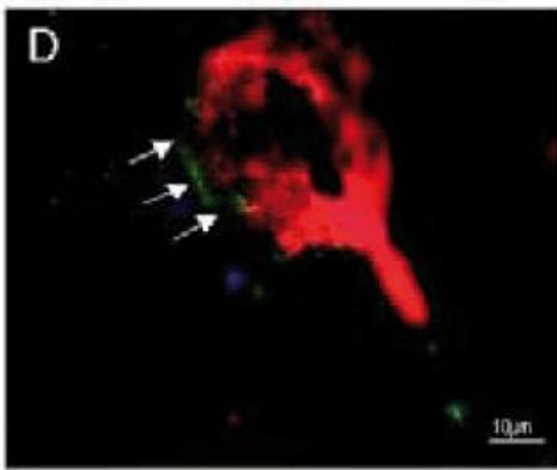
Format: Lyophilized

Reconstitution: Resuspend in aqua bidest.

Buffer: 20 ul (lyophilized) resuspend in 20 ul / 100u?l aqua bidest

Storage: 4 °C

Images



Immunofluorescence

Image 1. Immunofluorescence image of zonulin staining in cryosection of astrocytoma WHO III. ABIN165305 marks the beginning degradation of the blood-brain barrier. With zonulin (green) localized at the blood vessels (GSI agglutinin, red). Skardelly M et al. (2009) *Transl Oncol* 17-20.