

Datasheet for ABIN165346

anti-SppA1 antibody**1** Image[Go to Product page](#)

Overview

Quantity:	100 µL
Target:	SppA1
Reactivity:	Spinach, Arabidopsis, Chlamydomonas
Host:	Rabbit
Clonality:	Polyclonal
Conjugate:	This SppA1 antibody is un-conjugated
Application:	Western Blotting (WB)

Product Details

Immunogen:	recombinant SppA1 protease from Arabidopsis thaliana.
Isotype:	IgG
Specificity:	Arabidopsis , spinach, beans, Chlamydomonas, does not crossreact with Synechocystis sp. PCC 6803. For antibodies against Synechocystis SPpA1 and SppA2 see the products No.: P25S-1 and P10S-1, respectively.

Target Details

Target:	SppA1
Alternative Name:	SppA1 (SppA1 Products)
Background:	SppA1 is a 66 kDa serine-type protease found in thylakoid membranes of photosynthetic organisms. This family is represented in higher plants by one component, in most cyanobacteria – by two proteins (SppA1 and SppA2). SppA1 is a light activated protease and

Target Details

may be involved in the acclimation of photosynthetic membranes to high light (Lensch et al., J. Biol. Chem. 276, 33645 – 33651).

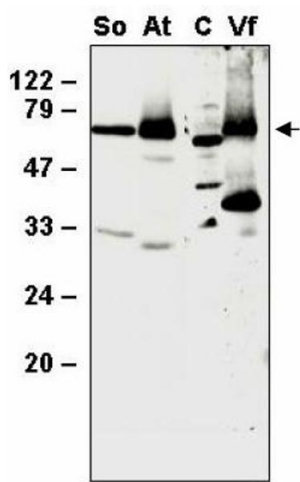
Application Details

Application Notes:	Western blot (1 : 2.000 for ECL)
Restrictions:	For Research Use only

Handling

Format:	Liquid
Storage:	4 °C

Images



Western Blotting

Image 1. Western blot analysis of thylakoid proteins from Spinacia olearcea (So), Arabidopsis thaliana (At), Vicia faba (Vf) and the whole cellular proteins from Chlamydomonas (C) with anti- SppA1