



[Go to Product page](#)

Datasheet for ABIN165382

## anti-CEBPB antibody

### 1 Image

#### Overview

Quantity:	100 µL
Target:	CEBPB
Reactivity:	Human, Mouse
Host:	Mouse
Clonality:	Monoclonal
Conjugate:	This CEBPB antibody is un-conjugated
Application:	Western Blotting (WB), ELISA

#### Product Details

Immunogen:	Recombinant C/EBP-beta, Accession / GI number: NP_005185
Clone:	47A1
Isotype:	IgG2b kappa
Purification:	The antibody was purified from mouse ascitic fluids by protein-G affinity chromatography

#### Target Details

Target:	CEBPB
Alternative Name:	C/EBP-beta ( <a href="#">CEBPB Products</a> )
Background:	CCAAT/enhancer-binding proteins (C/EBPs) are a family of basic leucine zipper (bZIP) DNA binding proteins that play important roles in normal cellular differentiation and function in a variety of tissues. The C/EBP family is critical for innate immunity and inflammatory response, and consists of five core members: C/EBPalpha, C/EBPbeta, C/EBPdelta, C/EBPgamma, and

## Target Details

C/EBPepsilon. Among these proteins, C/EBP beta is usually highly expressed in liver, intestine, lung and adipose. C/EBP beta has three isoforms, two activator, (LAP\* and LAP) and a repressor (LIP). These isoforms are differentially translated from the same mRNA. The expression of these isoforms is developmentally and hormonally regulated.

Pathways: [Interferon-gamma Pathway](#), [Autophagy](#), [Brown Fat Cell Differentiation](#)

## Application Details

Application Notes: Recommended dilution 1:1000

Restrictions: For Research Use only

## Handling

Format: Liquid

Concentration: 1mg/ml

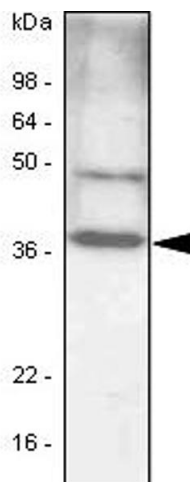
Buffer: In Phosphate-Buffered Saline (pH7.4) with 0.1% Sodium Azide

Preservative: Sodium azide

Precaution of Use: This product contains sodium azide: a POISONOUS AND HAZARDOUS SUBSTANCE which should be handled by trained staff only.

Storage: -20 °C

## Validation report #101185 for Enzyme Immunoassay (EIA)



### Western Blotting

**Image 1.** The cell lysates (40ug) were resolved by SDS-PAGE, transferred to PVDF membrane and probed with anti-human C/EBP-beta antibody (1:1000). Proteins were visualized using a goat anti-mouse secondary antibody conjugated to HRP and an ECL detection system. Lane 1.: 293T cell lysate