

Datasheet for ABIN165390
anti-CRP antibody (AA 19-224)



[Go to Product page](#)

2 Images

Overview

Quantity:	100 µL
Target:	CRP
Binding Specificity:	AA 19-224
Reactivity:	Human
Host:	Mouse
Clonality:	Monoclonal
Conjugate:	This CRP antibody is un-conjugated
Application:	Western Blotting (WB), ELISA, Immunocytochemistry (ICC), Immunofluorescence (IF), Flow Cytometry (FACS)

Product Details

Immunogen:	Recombinant human CRP (19-224aa) purified from E. coli
Clone:	5A9
Isotype:	IgG2a kappa
Purification:	The antibody was purified from mouse ascitic fluids by protein-G affinity chromatography

Target Details

Target:	CRP
Alternative Name:	C-Reactive Protein/CRP (CRP Products)
Background:	C-reactive protein (CRP) is an acute-phase protein with a well-known association with infection

Target Details

and other inflammatory conditions. Mild elevations in C-reactive protein concentration predict myocardial infarction, stroke, and vascular death in a variety of clinical settings. Despite the lack of specific evidence that C-reactive protein levels are independently associated with cardiovascular risk in patients with hypertension, the prognostic value of C-reactive protein has proven to be complementary to that of blood pressure values.

NCBI Accession: [NP_000558](#)

Pathways: [Carbohydrate Homeostasis](#)

Application Details

Application Notes: Recommended dilution 1:1000

Restrictions: For Research Use only

Handling

Format: Liquid

Concentration: 1 mg/mL

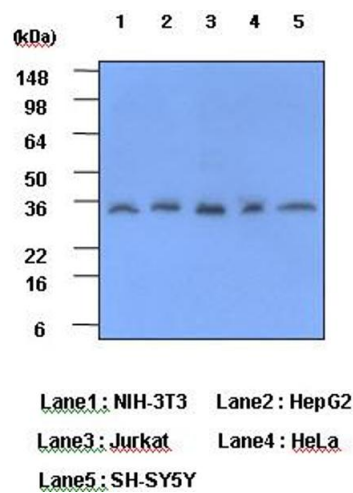
Buffer: In Phosphate-Buffered Saline (pH7.4) with 0.1% Sodium Azide

Preservative: Sodium azide

Precaution of Use: This product contains sodium azide: a POISONOUS AND HAZARDOUS SUBSTANCE which should be handled by trained staff only.

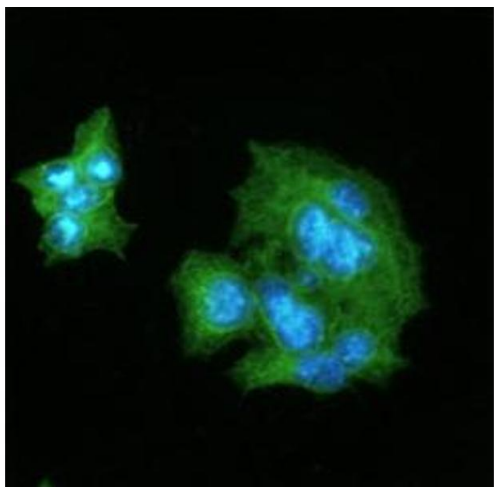
Storage: 4 °C, -20 °C, -80 °C

Storage Comment: Can be stored at +2°C to +8°C for 1 week. For long term storage, aliquot and store at -20°C to -80°C. Avoid repeated freezing and thawing cycles.



Western Blotting

Image 1.



Immunofluorescence

Image 2. ICC/IF analysis of CRP in HepG2 cells line, stained with DAPI (Blue) for nucleus staining and monoclonal anti-human CRP antibody (1:100) with goat anti-mouse IgG-Alexa fluor 488 conjugate (Green).