



[Go to Product page](#)

Datasheet for ABIN165396
anti-TPD52L1 antibody

1 Image

Overview

Quantity:	100 µL
Target:	TPD52L1
Reactivity:	Human
Host:	Mouse
Clonality:	Monoclonal
Conjugate:	This TPD52L1 antibody is un-conjugated
Application:	Western Blotting (WB), ELISA, Immunohistochemistry (IHC)

Product Details

Immunogen:	Recombinant TPD52L1, Accession / GI number: NP_001003397
Clone:	D1D5
Isotype:	Kappa
Purification:	The antibody was purified from mouse ascitic fluids by protein-G affinity chromatography

Target Details

Target:	TPD52L1
Alternative Name:	TPD52L1 (TPD52L1 Products)
Background:	D52-like (TPD52L1) protein is a member of D52 gene family and overexpressed in human breast carcinoma. This protein contains coiled-coil motif, which is responsible for homo- and heteromeric interaction, and may be regulators of cell proliferation and calcium-mediated signal transduction.

Target Details

Pathways: [Positive Regulation of Endopeptidase Activity](#)

Application Details

Application Notes: Recommended dilution 1:1000(W.B), Recommended dilution 1:200(IF)

Restrictions: For Research Use only

Handling

Format: Liquid

Concentration: 1mg/ml

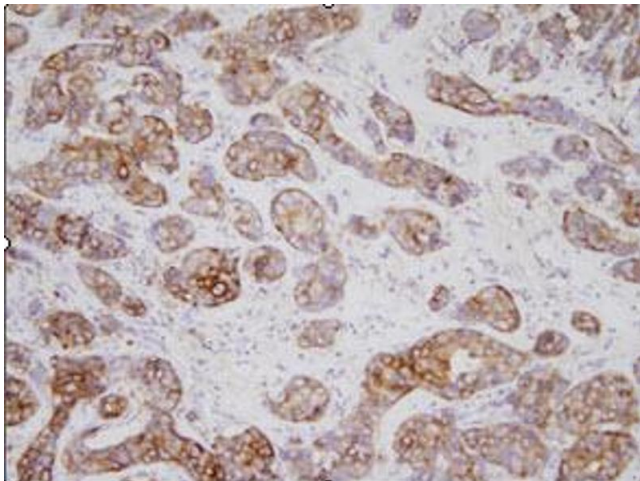
Buffer: In Phosphate-Buffered Saline (pH7.4) with 0.1% Sodium Azide

Preservative: Sodium azide

Precaution of Use: This product contains sodium azide: a POISONOUS AND HAZARDOUS SUBSTANCE which should be handled by trained staff only.

Storage: -20 °C

Images



Immunohistochemistry

Image 1. Immunohistochemistry: Human breast carcinoma tissues were incubated with anti-human TPD52L1 (1:200) for o/n at room temperature. Slides were then washed in PBS, and were incubated in avidin biosystem anti-rabbit labeled polymer for 30 min at RT. Enzyme detection was performed with DAB chromogen.