

Datasheet for ABIN165402

anti-GST antibody**2** Images[Go to Product page](#)

Overview

| | |
|--------------|------------------------------------|
| Quantity: | 100 µL |
| Target: | GST |
| Reactivity: | Human |
| Host: | Mouse |
| Clonality: | Monoclonal |
| Conjugate: | This GST antibody is un-conjugated |
| Application: | Western Blotting (WB), ELISA |

Product Details

| | |
|---------------|--|
| Immunogen: | Recombinant GST, |
| Clone: | 1-00E-05 |
| Isotype: | IgG1 kappa |
| Purification: | The antibody was purified from mouse ascitic fluids by protein-G affinity chromatography |

Target Details

| | |
|-------------------|---|
| Target: | GST |
| Alternative Name: | GST (GST Products) |
| Background: | Glutathione S transferases (GSTs) are a family of enzymes that play an important role in detoxification by catalyzing the conjugation of many hydrophobic and electrophilic compounds with reduced glutathione. GST proteins can be purified by immobilized glutathione affinity chromatography. Many recombinant proteins have been engineered with GST tags to facilitate |

Target Details

the detection, isolation and purification of these proteins. Monoclonal antibody reacting specifically with GST may be useful in various immunotechnique, to identify the expression of a GST fusion protein in bacteria, bacterial lysates or cells and tissues transfected with a GST fusion protein expressing vectors.

Application Details

Application Notes: Recommended dilution 1:1000

Restrictions: For Research Use only

Handling

Format: Liquid

Concentration: 1mg/ml

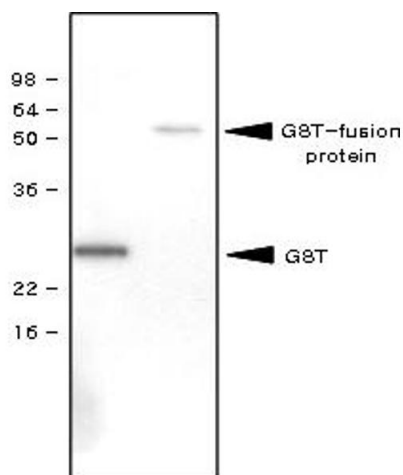
Buffer: In Phosphate-Buffered Saline (pH7.4) with 0.1% Sodium Azide

Preservative: Sodium azide

Precaution of Use: This product contains sodium azide: a POISONOUS AND HAZARDOUS SUBSTANCE which should be handled by trained staff only.

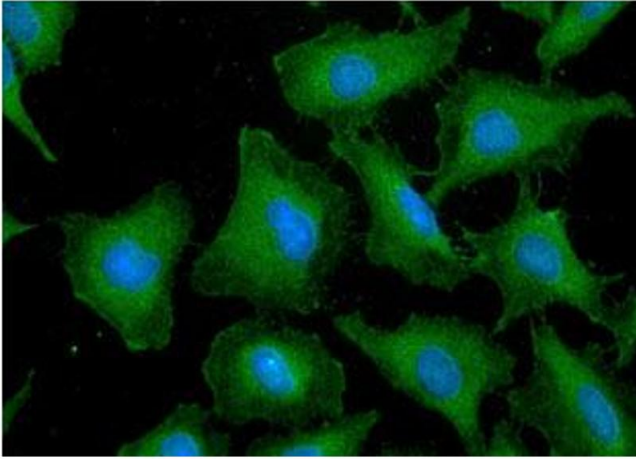
Storage: -20 °C

Images



Western Blotting

Image 1.



Immunofluorescence

Image 2. ICC/IF analysis of GST in HeLa cells line, stained with DAPI (Blue) for nucleus staining and monoclonal anti-human GST antibody (1:100) with goat anti-mouse IgG-Alexa fluor 488 conjugate (Green).