

Datasheet for ABIN165412

anti-HSP90AA2 antibody (AA 1-732)



[Go to Product page](#)

3 Images

Overview

Quantity:	100 µL
Target:	HSP90AA2
Binding Specificity:	AA 1-732
Reactivity:	Human
Host:	Mouse
Clonality:	Monoclonal
Conjugate:	This HSP90AA2 antibody is un-conjugated
Application:	Western Blotting (WB), ELISA, Immunohistochemistry (IHC), Immunofluorescence (IF), Immunocytochemistry (ICC), Flow Cytometry (FACS)

Product Details

Immunogen:	Recombinant human Hsp90 (1-732aa) purified from E. coli
Clone:	4F10
Isotype:	IgG2b kappa
Purification:	The antibody was purified from mouse ascitic fluids by protein-G affinity chromatography

Target Details

Target:	HSP90AA2
Alternative Name:	HSP90 alpha (HSP90AA2 Products)
Background:	Hsp90 is a human heat shock protein. In response to adverse change in their environment, cell

Target Details

from all organisms increase the expression of a class of proteins referred to as heat shock or stress protein. The Hsp90, a highly conserved stress-induced protein, is abundantly expressed in most tissues under non-stress conditions and is required for eukaryotic cell viability. Hsp90 is primarily a cytoplasmic protein and its function remains unknown. It exists in a dimeric form and has been observed to bind to several other cellular proteins such as retro-virus kinases, steroid receptor, heme-regulated protein kinase, actin and tubulin.

NCBI Accession: [NP_005339](#)

Application Details

Application Notes: Recommended dilution 1:1000(W.B), Recommended dilution 1:100(IHC)

Restrictions: For Research Use only

Handling

Format: Liquid

Concentration: 1 mg/mL

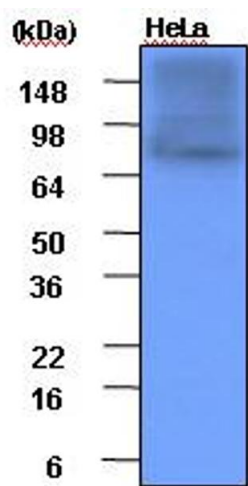
Buffer: In Phosphate-Buffered Saline (pH7.4) with 0.1% Sodium Azide

Preservative: Sodium azide

Precaution of Use: This product contains sodium azide: a POISONOUS AND HAZARDOUS SUBSTANCE which should be handled by trained staff only.

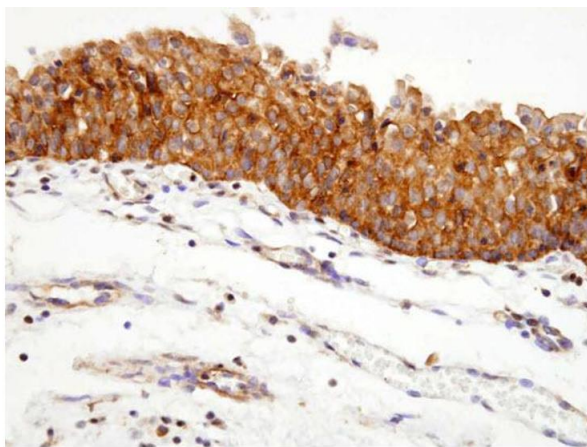
Storage: 4 °C,-20 °C,-80 °C

Storage Comment: Can be stored at +2°C to +8°C for 1 week. For long term storage, aliquot and store at -20°C to -80°C. Avoid repeated freezing and thawing cycles.



Western Blotting

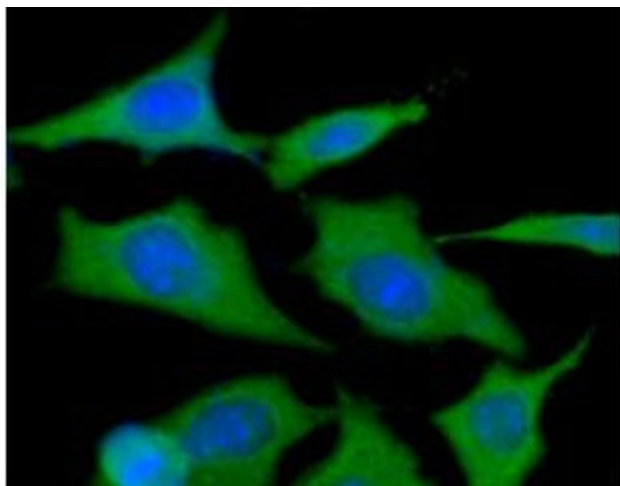
Image 1. Western blot analysis: Cell lysates of HeLa(each 20ug) were resolved by SDS-PAGE, transferred to PVDF membrane and probed with anti-human Hsp90 (1:1000). Proteins were visualized using a goat anti-mouse secondary antibody conjugated to HRP and an ECL detection system.



Human urothelium

Immunohistochemistry

Image 2. Paraffin embedded sections of human urothelium were incubated with anti-human Hsp90 (1:100) for 2 hours at room temperature. Antigen retrieval was performed in 0.1M sodium citrate buffer and detected using Diaminobenzidine (DAB)



Immunofluorescence

Image 3. ICC/IF analysis of HSP90 in HeLa cells line, stained with DAPI (Blue) for nucleus staining and monoclonal anti-human HSP90 antibody (1:100) with goat anti-mouse IgG-Alexa fluor 488 conjugate (Green).