



Datasheet for ABIN165414 anti-HTRA2 antibody



[Go to Product page](#)

1 Image

Overview

Quantity:	100 µL
Target:	HTRA2
Reactivity:	Human, Mouse
Host:	Mouse
Clonality:	Monoclonal
Conjugate:	This HTRA2 antibody is un-conjugated
Application:	Western Blotting (WB), ELISA

Product Details

Immunogen:	Recombinant HtrA2/Omi, Accession / GI number: NP_037379
Clone:	1B3
Isotype:	IgG2b kappa
Purification:	The antibody was purified from mouse ascitic fluids by protein-G affinity chromatography

Target Details

Target:	HTRA2
Alternative Name:	HtrA2/Omi (HTRA2 Products)
Background:	HtrA2/Omi is a mammalian serine protease at high temperatures and a chaperone at low temperature. The full-length HtrA2 is synthesized as a precursor protein and then targeted to the mitochondria where it is matured by the removal of N-terminal 133 residues. Recently, HtrA2 has known to contribute both to caspase-dependent and caspase-independent cell death

Target Details

Pathways: [Positive Regulation of Endopeptidase Activity](#)

Application Details

Application Notes: Recommended dilution 1:1000

Restrictions: For Research Use only

Handling

Format: Liquid

Concentration: 1mg/ml

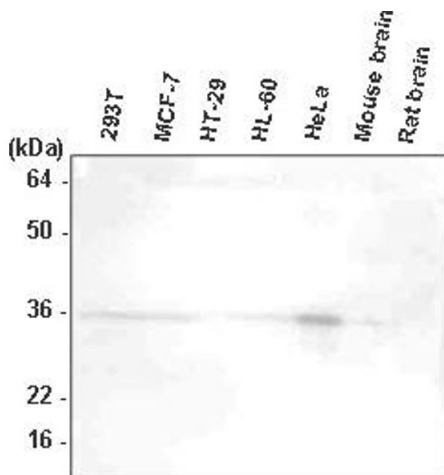
Buffer: In Phosphate-Buffered Saline (pH7.4) with 0.1% Sodium Azide

Preservative: Sodium azide

Precaution of Use: This product contains sodium azide: a POISONOUS AND HAZARDOUS SUBSTANCE which should be handled by trained staff only.

Storage: -20 °C

Images



Western Blotting

Image 1.