



Datasheet for ABIN165418 anti-ISG15 antibody



[Go to Product page](#)

2 Images

Overview

| | |
|--------------|--------------------------------------|
| Quantity: | 100 µL |
| Target: | ISG15 |
| Reactivity: | Human |
| Host: | Mouse |
| Clonality: | Monoclonal |
| Conjugate: | This ISG15 antibody is un-conjugated |
| Application: | Western Blotting (WB), ELISA |

Product Details

| | |
|---------------|--|
| Immunogen: | Recombinant ISG15, Accession / GI number: NP_005092 |
| Clone: | 3-00E-05 |
| Isotype: | Kappa |
| Purification: | The antibody was purified from mouse ascitic fluids by protein-G affinity chromatography |

Target Details

| | |
|-------------------|--|
| Target: | ISG15 |
| Alternative Name: | ISG15 (ISG15 Products) |
| Background: | ISG15, a 15 kDa protein encoded by an interferon stimulated gene, and its modification system play important roles in the innate immune response, regulation of interferon signaling, pregnancy, and several cancers. ISG15 is an ubiquitin-like protein containing two ubiquitin homology domains and becomes conjugated to a variety of proteins when cells are treated with |

Target Details

type I interferon or lipopolysaccharide.

Application Details

Application Notes: Recommended dilution 1:1000

Restrictions: For Research Use only

Handling

Format: Liquid

Concentration: 1mg/ml

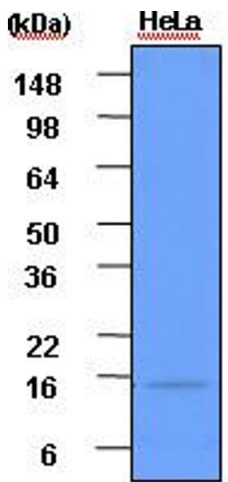
Buffer: In Phosphate-Buffered Saline (pH7.4) with 0.1% Sodium Azide

Preservative: Sodium azide

Precaution of Use: This product contains sodium azide: a POISONOUS AND HAZARDOUS SUBSTANCE which should be handled by trained staff only.

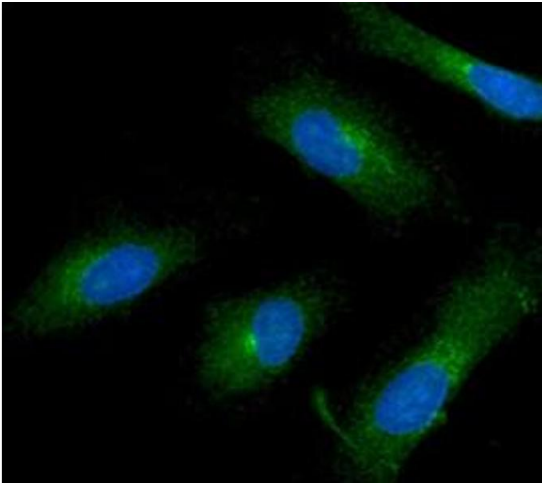
Storage: -20 °C

Images



Western Blotting

Image 1. Western blot analysis: Cell lysates of HeLa (each 50ug) were resolved by SDS-PAGE, transferred to PVDF membrane and probed with anti-human ISG15 (1:1000). Proteins were visualized using a goat anti-mouse secondary antibody conjugated to HRP and an ECL detection system.



Immunofluorescence

Image 2. ICC/IF analysis of ISG15 in HeLa cells line, stained with DAPI (Blue) for nucleus staining and monoclonal anti-human ISG15 antibody (1:100) with goat anti-mouse IgG-Alexa fluor 488 conjugate (Green).