



[Go to Product page](#)

Datasheet for ABIN165420

## anti-KIR2D antibody

### 1 Image

#### Overview

Quantity:	100 µL
Target:	KIR2D
Reactivity:	Human
Host:	Mouse
Clonality:	Monoclonal
Conjugate:	This KIR2D antibody is un-conjugated
Application:	Western Blotting (WB), ELISA

#### Product Details

Immunogen:	Recombinant KIR2D,
Clone:	2H6
Isotype:	IgG1 kappa
Specificity:	This antibody recognises KIR2DL1, KIR2DL3, KIR2DL4 and KIR2DS4, members of killer cell immunoglobulin-like receptor family.
Purification:	The antibody was purified from mouse ascitic fluids by protein-G affinity chromatography

#### Target Details

Target:	KIR2D
Alternative Name:	KIR2D ( <a href="#">KIR2D Products</a> )
Background:	The KIR family consists of transmembrane glycoproteins of the Ig superfamily expressed on

## Target Details

human NK cells and a subset of human T cells which they are involved in recognition of either MHC class I molecules or unknown ligand on target cells and inhibit cytotoxic activities.

## Application Details

Application Notes: Recommended dilution 1:500

Restrictions: For Research Use only

## Handling

Format: Liquid

Concentration: 1mg/ml

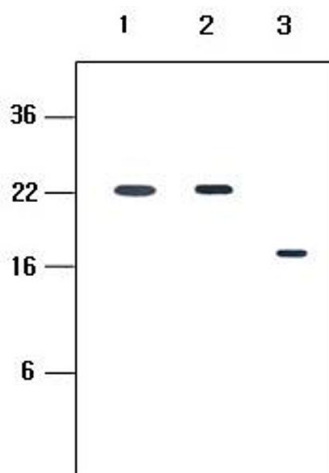
Buffer: In Phosphate-Buffered Saline (pH7.4) with 0.1% Sodium Azide

Preservative: Sodium azide

Precaution of Use: This product contains sodium azide: a POISONOUS AND HAZARDOUS SUBSTANCE which should be handled by trained staff only.

Storage: -20 °C

## Images



### Western Blotting

**Image 1.** Western blot analysis: Human recombinant protein KIR2DL1, KIR2DL3 and KIR2DL4 (each 20ng per well) were resolved by SDS-PAGE, transferred to PVDF membrane and probed with anti-human KIR2DL4 (1:500). Proteins were visualized using a goat anti-mouse secondary antibody conjugated to HRP and a ECL detection system \*  
Lane 1 : Extracellular domain of KIR2DL1(23-223aa), Lane 2 : Extracellular domain of KIR2DL3(23-223aa), Lane 3 : Extracellular domain of KIR2DL4(44-202aa)