



Datasheet for ABIN165424 anti-KIR2DL3 antibody



[Go to Product page](#)

1 Image

Overview

Quantity:	100 µL
Target:	KIR2DL3
Reactivity:	Human
Host:	Mouse
Clonality:	Monoclonal
Conjugate:	This KIR2DL3 antibody is un-conjugated
Application:	Western Blotting (WB), ELISA, Flow Cytometry (FACS)

Product Details

Immunogen:	Recombinant KIR2DL3, Accession / GI number: NP_055326
Clone:	190IIC311
Isotype:	IgG2b kappa
Purification:	The antibody was purified from mouse ascitic fluids by protein-G affinity chromatography

Target Details

Target:	KIR2DL3
Alternative Name:	KIR2DL3 (KIR2DL3 Products)
Background:	Reacts with extracellular domain of the KIR2DL3, a member of the killer cell immunoglobulin-like receptor(KIR) family. The KIR family consists of transmembrane glycoproteins of the Ig superfamily expressed on human NK cells and a subset of human T cells which they are involved in recognition of either MHC class I molecules or unknown ligand on target cells and

Target Details

inhibit cytotoxic activities.

Pathways: [Cancer Immune Checkpoints](#)

Application Details

Application Notes: Recommended dilution 1:1000(W.B), (FACS)

Restrictions: For Research Use only

Handling

Format: Liquid

Concentration: 1mg/ml

Buffer: In Phosphate-Buffered Saline (pH7.4) with 0.1% Sodium Azide

Preservative: Sodium azide

Precaution of Use: This product contains sodium azide: a POISONOUS AND HAZARDOUS SUBSTANCE which should be handled by trained staff only.

Storage: -20 °C

Validation report #101185 for Enzyme Immunoassay (EIA)

Profile of NK cells analyzed by flow

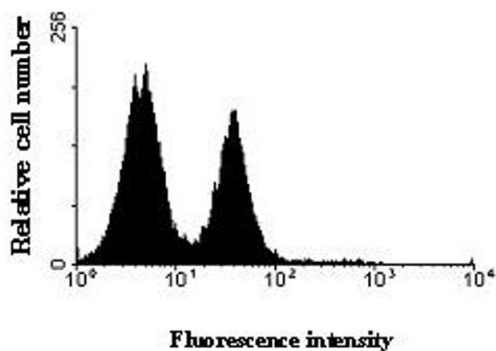


Image 1.