

Datasheet for ABIN165432

anti-MIF antibody[Go to Product page](#)**1** Image

Overview

Quantity:	100 µL
Target:	MIF
Reactivity:	Human
Host:	Mouse
Clonality:	Monoclonal
Conjugate:	This MIF antibody is un-conjugated
Application:	Western Blotting (WB), ELISA

Product Details

Immunogen:	Recombinant MIF, Accession / GI number: NP_002406
Clone:	4-00E-04
Isotype:	IgG2b kappa
Purification:	The antibody was purified from mouse ascitic fluids by protein-G affinity chromatography

Target Details

Target:	MIF
Alternative Name:	MIF (MIF Products)
Background:	The cytokine Macrophage migration inhibitory factor (MIF) has been identified to be secreted by the pituitary gland and the monocyte/macrophage and to play an important role in endotoxic shock. MIF has the unique property of being released from macrophages and T cells in response to physiological concentrations of glucocorticoids. The secretion of MIF is tightly

Target Details

regulated and decreases at high, anti-inflammatory steroid concentration.

Pathways: [Regulation of Systemic Arterial Blood Pressure by Hormones](#), [Positive Regulation of Immune Effector Process](#), [Production of Molecular Mediator of Immune Response](#), [Regulation of Carbohydrate Metabolic Process](#), [Feeding Behaviour](#), [Smooth Muscle Cell Migration](#), [Negative Regulation of intrinsic apoptotic Signaling](#)

Application Details

Application Notes: Recommended dilution 1:1000

Restrictions: For Research Use only

Handling

Format: Liquid

Concentration: 1mg/ml

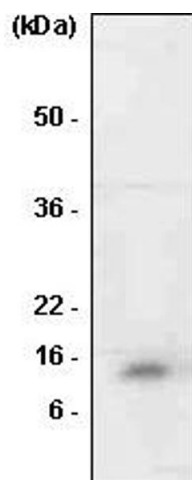
Buffer: In Phosphate-Buffered Saline (pH7.4) with 0.1% Sodium Azide

Preservative: Sodium azide

Precaution of Use: This product contains sodium azide: a POISONOUS AND HAZARDOUS SUBSTANCE which should be handled by trained staff only.

Storage: -20 °C

Images



Western Blotting

Image 1.