



Datasheet for ABIN165440
anti-NCR1 antibody



[Go to Product page](#)

1 Image

Overview

Quantity:	100 µL
Target:	NCR1
Reactivity:	Human
Host:	Mouse
Clonality:	Monoclonal
Conjugate:	This NCR1 antibody is un-conjugated
Application:	Western Blotting (WB), Flow Cytometry (FACS), ELISA

Product Details

Immunogen:	Recombinant NKp46, Accession / GI number: NP_004820
Clone:	N1D9
Isotype:	Kappa
Purification:	The antibody was purified from mouse ascitic fluids by protein-G affinity chromatography

Target Details

Target:	NCR1
Alternative Name:	NKp46 (NCR1 Products)
Background:	A natural cytotoxicity receptor (NCR), NKp46, is a glycoprotein that has two extracellular Ig-like domains followed by a ~40 residue stalk region, a type I transmembrane domain, and a short cytoplasmic tail. NKp46 has been shown to represent a novel NK cell-specific molecule involved in human NK cell activation. The natural cytotoxicity receptors (NCRs) are a recently

Target Details

characterized family of Ig-like activation receptors that appear to be major triggering receptors in tumor cell recognition. NKp46 has been implicated in NK cell-mediated lysis of several autologous tumor cells and pathogen-infected cell lines.

Pathways: [Regulation of Leukocyte Mediated Immunity](#)

Application Details

Restrictions: For Research Use only

Handling

Format: Liquid

Concentration: 1mg/ml

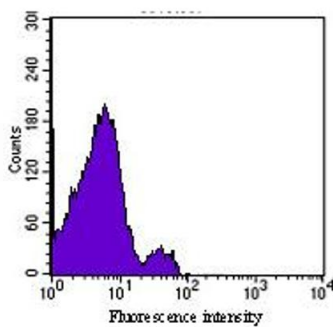
Buffer: In Phosphate-Buffered Saline (pH7.4) with 0.1% Sodium Azide

Preservative: Sodium azide

Precaution of Use: This product contains sodium azide: a POISONOUS AND HAZARDOUS SUBSTANCE which should be handled by trained staff only.

Storage: -20 °C

Images



Profile of PBMC analyzed by flow

Image 1.