



Datasheet for ABIN165442 anti-NPM1 antibody



[Go to Product page](#)

4 Images

Overview

Quantity:	100 µL
Target:	NPM1
Reactivity:	Human
Host:	Mouse
Clonality:	Monoclonal
Conjugate:	This NPM1 antibody is un-conjugated
Application:	Western Blotting (WB), Immunohistochemistry (IHC), ELISA

Product Details

Immunogen:	Recombinant NPM, Accession / GI number: NP_002511
Clone:	5-00E-03
Isotype:	Kappa
Purification:	The antibody was purified from mouse ascitic fluids by protein-G affinity chromatography

Target Details

Target:	NPM1
Alternative Name:	NPM (NPM1 Products)
Background:	Nucleophosmin (NPM, also known as B23, NO38, or numatrin) is a nucleolar phosphoprotein that binds the tumor suppressors p53 and p19Arf and is thought to be indispensable for ribogenesis, cell proliferation, and survival after DNA damage. Nucleophosmin is upregulated in many cancer cells.

Target Details

Pathways: [Ribonucleoprotein Complex Subunit Organization](#), [Ribosome Assembly](#)

Application Details

Application Notes: Recommended dilution 1:1000(W.B), Recommended dilution 1:100(IHC)

Restrictions: For Research Use only

Handling

Format: Liquid

Concentration: 1mg/ml

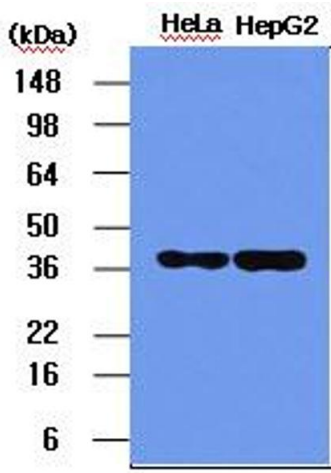
Buffer: In Phosphate-Buffered Saline (pH7.4) with 0.1% Sodium Azide

Preservative: Sodium azide

Precaution of Use: This product contains sodium azide: a POISONOUS AND HAZARDOUS SUBSTANCE which should be handled by trained staff only.

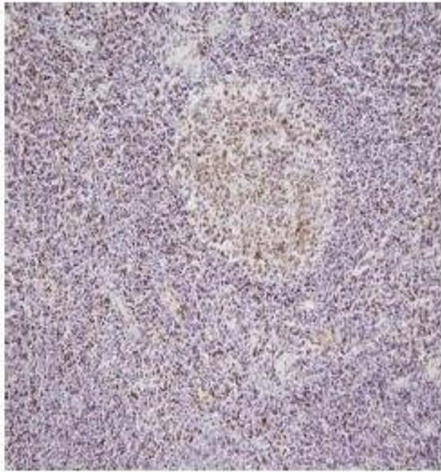
Storage: -20 °C

Images



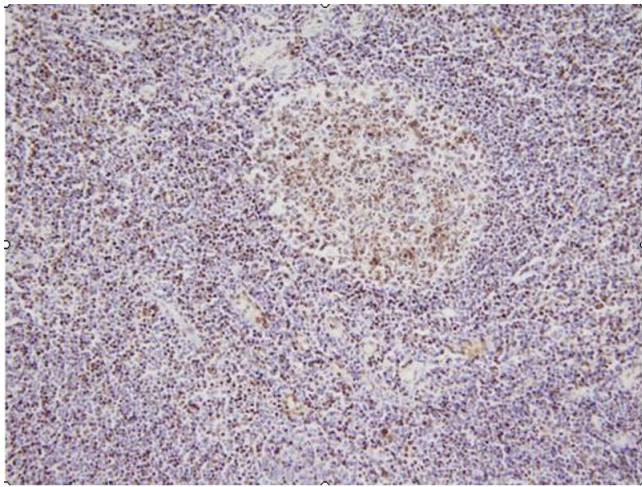
Western Blotting

Image 1. Western blot analysis: The HeLa and HepG2 cell lysates (5ug) were resolved by SDS-PAGE, transferred to PVDF membrane and probed with anti-human NPM (1:1000). Proteins were visualized using a goat anti-mouse secondary antibody conjugated to HRP and an ECL detection system.



Immunohistochemistry (Paraffin-embedded Sections)

Image 2. Immunohistochemistry This image shows paraffin-embedded human palatine tonsil tissue sample stained with anti-NPM antibody(5E3) at 1:100 dilution.



Immunohistochemistry

Image 3. This image shows paraffin-embedded human palatine tonsil tissue sample stained with anti-NPM antibody (5E3) at 1:100 dilution.

Please check the [product details page](#) for more images. Overall 4 images are available for ABIN165442.