

Datasheet for ABIN165456 **anti-RASSF1 antibody**

2 Images



[Go to Product page](#)

Overview

Quantity:	100 µL
Target:	RASSF1
Reactivity:	Human
Host:	Mouse
Clonality:	Monoclonal
Conjugate:	This RASSF1 antibody is un-conjugated
Application:	Western Blotting (WB), ELISA, Immunocytochemistry (ICC)

Product Details

Immunogen:	Recombinant RASSF1A, Accession / GI number: NP_009113
Clone:	3F3
Isotype:	IgG1 kappa
Purification:	The antibody was purified from mouse ascitic fluids by protein-G affinity chromatography

Target Details

Target:	RASSF1
Alternative Name:	RASSF1A (RASSF1 Products)
Background:	The tumor suppressor gene RASSF1A (3p21.3), human Ras association domain family 1A, is expressed in heart, brain, placenta, lung, liver, skeletal muscle, kidney, pancreas, spleen, thymus, prostate, testis, small intestine, colon, and peripheral blood leukocytes. RASSF1A expression is inhibited by hypermethylation of the CpG island including the promoter and early transcribed

Target Details

regions of the human RASSF1A gene. Hypermethylated RASSF1A promoter is observed in primary tumors. Furthermore, RASSF1A is related with cell cycle regulation, apoptosis and microtubule stability.

Application Details

Application Notes: Recommended dilution 1:1000(W.B), (ICC)

Restrictions: For Research Use only

Handling

Format: Liquid

Concentration: 1mg/ml

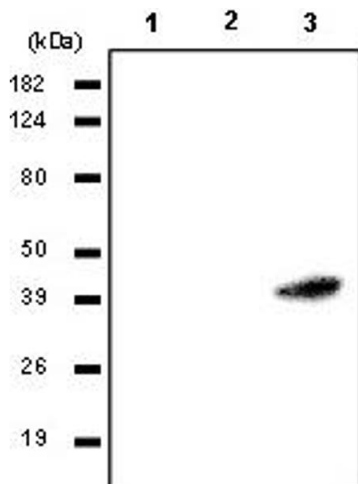
Buffer: In Phosphate-Buffered Saline (pH7.4) with 0.1% Sodium Azide

Preservative: Sodium azide

Precaution of Use: This product contains sodium azide: a POISONOUS AND HAZARDOUS SUBSTANCE which should be handled by trained staff only.

Storage: -20 °C

Images



Western Blotting

Image 1.



Image 2.

