



Datasheet for ABIN165458
anti-SET7/9 antibody



[Go to Product page](#)

2 Images

Overview

Quantity:	100 µL
Target:	SET7/9
Reactivity:	Human
Host:	Mouse
Clonality:	Monoclonal
Conjugate:	This SET7/9 antibody is un-conjugated
Application:	Western Blotting (WB), ELISA

Product Details

Immunogen:	Recombinant SET 7/9 , Accession / GI number: NP_085151
Clone:	S4E5
Isotype:	Kappa
Purification:	The antibody was purified from mouse ascitic fluids by protein-G affinity chromatography

Target Details

Target:	SET7/9
Alternative Name:	SET 7/9 (SET7/9 Products)
Background:	Set7/9 is a histone methyltransferase(HMTase) that transfers methyl group to Lys4 of histone H3, in complex with S-adenosyl-L-methionine(AdoMet). The methylation of lysine residues of histones plays a critical role in the regulation of chromatin structure and gene expression.Acetylation, phosphorylation and methylation of the amino-terminal tails of histone

Target Details

are thought to be involved in the regulation of chromatin structure and function. The enzymes identified in the methylation of specific lysine residue on histones belong to the SET family with just one exception. Set7/9, unlike most other SET proteins, is exclusively a mono-methylase.

Concentration

Application Details

Application Notes: Recommended dilution 1:1000

Restrictions: For Research Use only

Handling

Format: Liquid

Concentration: 1mg/ml

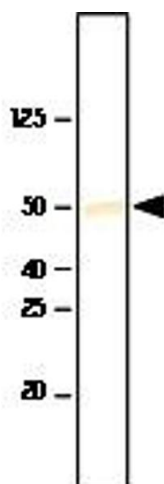
Buffer: In Phosphate-Buffered Saline (pH7.4) with 0.1% Sodium Azide

Preservative: Sodium azide

Precaution of Use: This product contains sodium azide: a POISONOUS AND HAZARDOUS SUBSTANCE which should be handled by trained staff only.

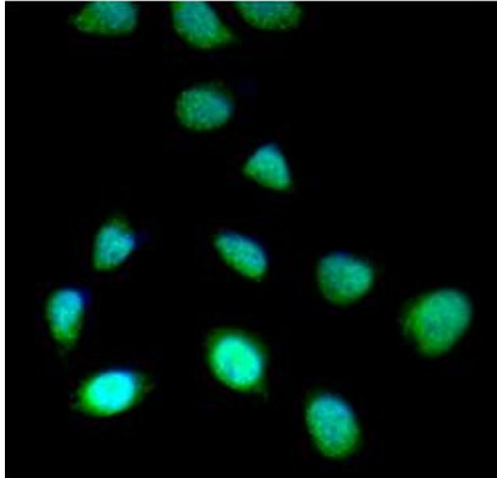
Storage: -20 °C

Images



Western Blotting

Image 1.



Immunofluorescence

Image 2. ICC/IF analysis of SET7/9 in HeLa cells line, stained with DAPI (Blue) for nucleus staining and monoclonal anti-human SET7/9 antibody (1:100) with goat anti-mouse IgG-Alexa fluor 488 conjugate (Green).