



[Go to Product page](#)

Datasheet for ABIN165466

## anti-GRP94 antibody

### 3 Images

#### Overview

Quantity:	100 µL
Target:	GRP94 (HSP90B1)
Reactivity:	Human
Host:	Mouse
Clonality:	Monoclonal
Conjugate:	This GRP94 antibody is un-conjugated
Application:	Western Blotting (WB), Immunofluorescence (IF), ELISA

#### Product Details

Immunogen:	Recombinant TRA1 , Accession / GI number: NP_003290
Clone:	2H3
Isotype:	Kappa
Purification:	The antibody was purified from mouse ascitic fluids by protein-G affinity chromatography

#### Target Details

Target:	GRP94 (HSP90B1)
Alternative Name:	TRA1 ( <a href="#">HSP90B1 Products</a> )
Background:	Tumor rejection antigen 1(TRA1) is expressed on the surface of human teratocarcinoma stem cells (EC), human embryonic germ cells (EG) and human embryonic stem cells (ES). TRA1 is a marker protein of these stem cells.

## Target Details

Pathways: [Thyroid Hormone Synthesis](#), [Activation of Innate immune Response](#), [ER-Nucleus Signaling](#), [Toll-Like Receptors Cascades](#)

## Application Details

Application Notes: Recommended dilution 1:500(W.B), Recommended dilution 1:100(IF)

Restrictions: For Research Use only

## Handling

Format: Liquid

Concentration: 1mg/ml

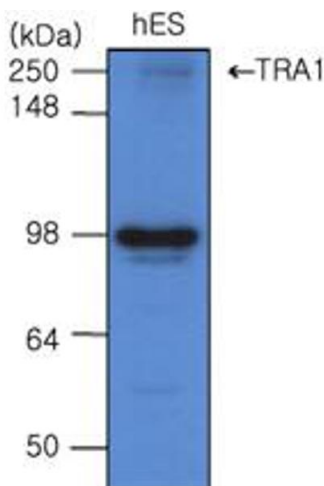
Buffer: In Phosphate-Buffered Saline (pH7.4) with 0.1% Sodium Azide

Preservative: Sodium azide

Precaution of Use: This product contains sodium azide: a POISONOUS AND HAZARDOUS SUBSTANCE which should be handled by trained staff only.

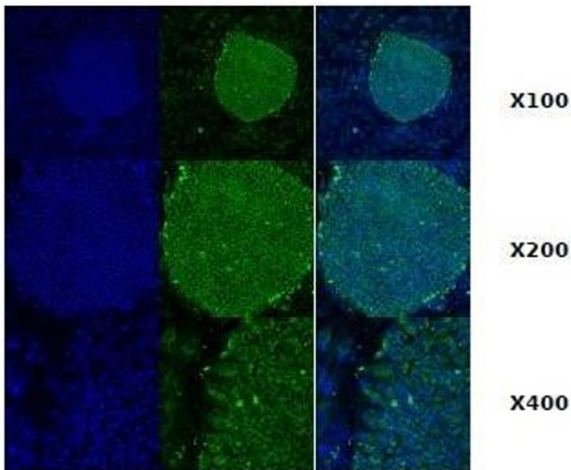
Storage: -20 °C

## Images



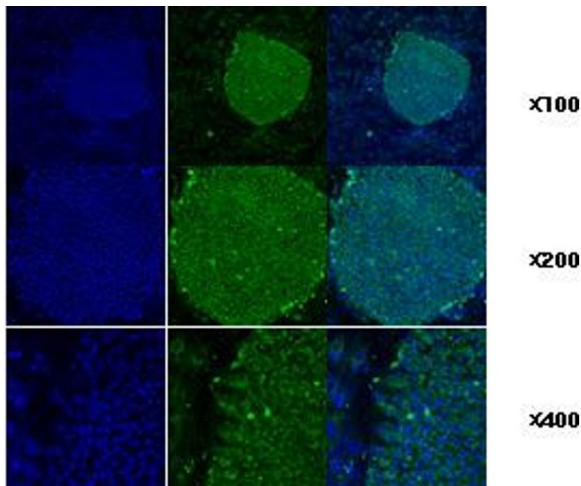
### Western Blotting

**Image 1.** Western blot analysis: The cell lysates of hES(20ug) were resolved by SDS-PAGE, transferred to PVDF membrane and probed with antihuman TRA 1 (1:500). Proteins were visualized using a goat anti-mouse secondary antibody conjugated to HRP and an ECL detection system.



### Immunofluorescence

**Image 2.** Immunofluorescence: Immunofluorescence staining of human ES cell colony with monoclonal anti-human TRA1 antibody (2H3)



### Immunofluorescence

**Image 3.** Immunofluorescence staining of human ES cell colony with monoclonal anti-human TRA1 antibody (2H3)