

Datasheet for ABIN1678513
anti-ABCF2 antibody (AA 1-250)



[Go to Product page](#)

4 Images

Overview

Quantity:	100 µg
Target:	ABCF2
Binding Specificity:	AA 1-250
Reactivity:	Human
Host:	Rabbit
Clonality:	Polyclonal
Conjugate:	This ABCF2 antibody is un-conjugated
Application:	Western Blotting (WB), Immunofluorescence (IF)

Product Details

Immunogen:	Recombinant fusion protein containing a sequence corresponding to amino acids 1-250 of human ABCF2 (NP_005683.2).
Sequence:	MPSDLAKKKA AKKKEAAKAR QRPRKGHEEN GDVVTEPQVA EKNEANGRET TEVDLLTKEL EDFEMKKA AAA RAVTGV LASH PNSTDVHIIN LSLTFHGQEL LSDTKLELNS GRRYGLIGLN GIGKSM LLSA IGKREVP IPE HIDIYHLTRE MPPSDKTPLH CVMEVDTERA MLEKEAERLA HEDAECEKLM ELYERLEELD ADKAEMRASR ILHGLGFTPA MQRKCLKDFS GGWRMRVALA RALFIRPFML
Isotype:	IgG
Cross-Reactivity:	Human, Mouse
Characteristics:	Polyclonal Antibodies
Purification:	Affinity purification

Target Details

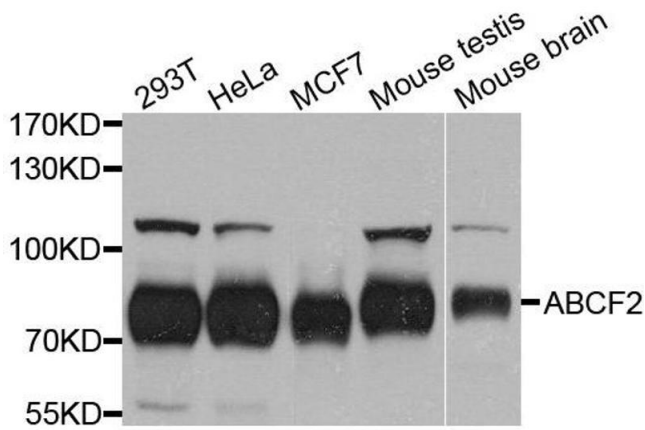
Target:	ABCF2
Alternative Name:	ABCF2 (ABCF2 Products)
Background:	This gene encodes a member of the ATP-binding cassette (ABC) transporter superfamily. ATP-binding cassette proteins transport various molecules across extra- and intracellular membranes. Alterations in this gene may be involved in cancer progression. Alternative splicing results in multiple transcript variants. Related pseudogenes have been identified on chromosomes 3 and 7., ABCF2 , ABC28 , EST133090 , HUSSY-18 , HUSSY18 , Epigenetics & Nuclear Signaling , Signal Transduction , ABCF2
Molecular Weight:	71 kDa/72 kDa
Gene ID:	10061
UniProt:	Q9UG63

Application Details

Application Notes:	WB,1:500 - 1:2000,IF,1:50 - 1:200
Restrictions:	For Research Use only

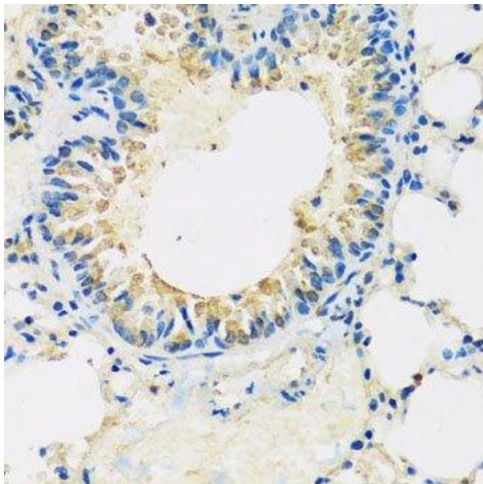
Handling

Buffer:	PBS with 0.02 % sodium azide,50 % glycerol, pH 7.3.
Preservative:	Sodium azide
Precaution of Use:	This product contains Sodium azide: a POISONOUS AND HAZARDOUS SUBSTANCE which should be handled by trained staff only.
Storage:	-20 °C
Storage Comment:	Store at -20°C. Avoid freeze / thaw cycles.



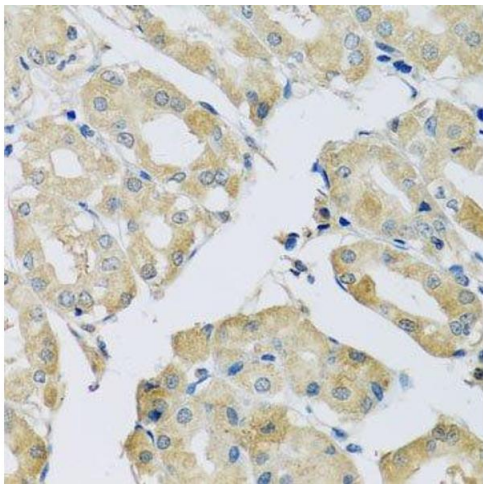
Western Blotting

Image 1. Western blot analysis of extracts of various cell lines, using ABCF2 antibody.



Immunohistochemistry (Paraffin-embedded Sections)

Image 2. Immunohistochemistry of paraffin-embedded mouse lung using ABCF2 antibody.



Immunohistochemistry (Paraffin-embedded Sections)

Image 3. Immunohistochemistry of paraffin-embedded human stomach using ABCF2 antibody.

Please check the [product details page](#) for more images. Overall 4 images are available for ABIN1678513.