

Datasheet for ABIN1678570
anti-ADAP1 antibody (AA 1-374)



[Go to Product page](#)

3 Images

Overview

Quantity:	100 µg
Target:	ADAP1
Binding Specificity:	AA 1-374
Reactivity:	Human
Host:	Rabbit
Clonality:	Polyclonal
Conjugate:	This ADAP1 antibody is un-conjugated
Application:	Western Blotting (WB), Immunofluorescence (IF)

Product Details

Immunogen:	Recombinant fusion protein containing a sequence corresponding to amino acids 1-374 of human ADAP1 (NP_006860.1).
Sequence:	MAKERRRAVL ELLQRPGNAR CADCGAPDPD WASYTLGVFI CLSCSGIHRN IPQVSKVKS RLDAWEEAQV EFMASHGND AARARFESKVP SFYYRPTPSD CQLREQWIR AKYERQEFYI PEKQEPYSAG YREGFLWKRG RDNGQFLSRK FVLTEREGAL KYFNRNDAKE PKAVMKIEHL NATFQPAKIG HPHGLQVTYL KDNSTRNIFI YHEDGKEIVD WFNALRAARF HYLQVAFPGA SDADLVPKLS RNYLKEGYME KTGPKQTEGF RKRWFTMDDR RLMYFKDPLD AFARGEVFIG SKESGYTVLH GFPPSTQGGH WPHGITIVTP DRKFLFACET ESDQREWVAA FQKAVDRPML PQEYAVEAHF KHKP
Isotype:	IgG
Cross-Reactivity:	Human, Mouse, Rat

Product Details

Characteristics: Polyclonal Antibodies

Purification: Affinity purification

Target Details

Target: ADAP1

Alternative Name: ADAP1 ([ADAP1 Products](#))

Background: GTPase-activating protein for the ADP ribosylation factor family (Probable. Binds phosphatidylinositol 3,4,5-trisphosphate (PtdInsP3 and inositol 1,3,4,5-tetrakisphosphate (InsP4.,ADAP1,CENTA1,GCS1L,p42IP4,Signal Transduction,Neuroscience,ADAP1

Molecular Weight: 35 kDa/43 kDa/44 kDa

Gene ID: 11033

UniProt: [O75689](#)

Application Details

Application Notes: WB,1:500 - 1:2000,IF,1:50 - 1:200

Restrictions: For Research Use only

Handling

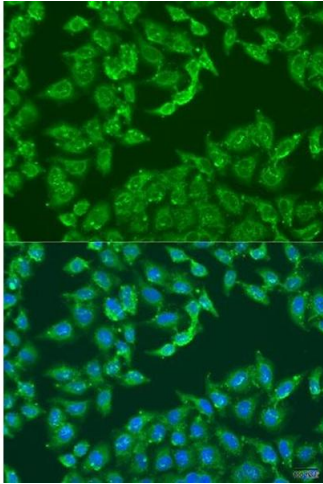
Buffer: PBS with 0.02 % sodium azide,50 % glycerol, pH 7.3.

Preservative: Sodium azide

Precaution of Use: This product contains Sodium azide: a POISONOUS AND HAZARDOUS SUBSTANCE which should be handled by trained staff only.

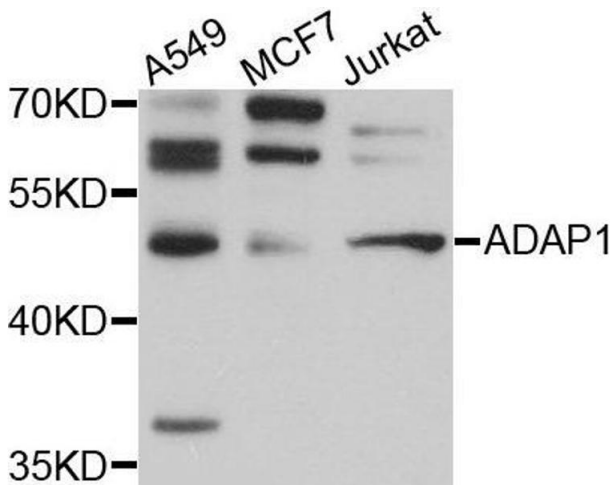
Storage: -20 °C

Storage Comment: Store at -20°C. Avoid freeze / thaw cycles.



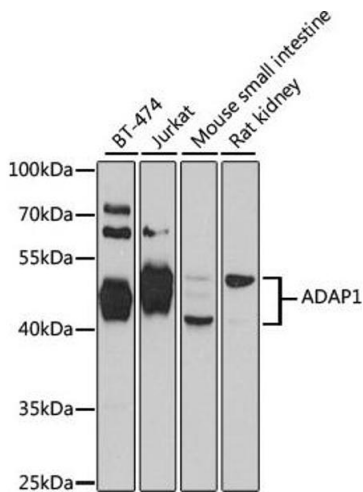
Immunofluorescence

Image 1. Immunofluorescence analysis of U2OS cells using antibody at dilution of 1:100. Blue: DAPI for nuclear staining.



Western Blotting

Image 2.



Western Blotting

Image 3. Western blot analysis of extracts of various cell lines, using antibody at 1:1000 dilution. Secondary antibody: HRP Goat Anti-Rabbit IgG (H+L) (ABIN1684268 and ABIN3020597) at 1:10000 dilution. Lysates/proteins: 25 µg per lane. Blocking buffer: 3% nonfat dry milk in TBST. Detection: ECL Basic Kit (RM00020). Exposure time: 30s.