

Datasheet for ABIN1678588

anti-alpha 1 Adrenergic Receptor antibody (AA 346-475)[Go to Product page](#)

7 Images

Overview

Quantity:	100 µg
Target:	alpha 1 Adrenergic Receptor (ADRA1A)
Binding Specificity:	AA 346-475
Reactivity:	Human
Host:	Rabbit
Clonality:	Polyclonal
Conjugate:	This alpha 1 Adrenergic Receptor antibody is un-conjugated
Application:	Western Blotting (WB), Immunohistochemistry (IHC), Immunofluorescence (IF)

Product Details

Immunogen:	Recombinant fusion protein containing a sequence corresponding to amino acids 346-475 of human ADRA1A (NP_150646.3).
Sequence:	LCRKQSSKHA LGYTLHPPSQ AVEGQHKDMV RIPVGSRETF YRISKTDGVC EWKFFSSMPR GSARITVSKD QSSCTTARTK SRSVTRLECS GMILAHCNLR LPGSRDSPAS ASQAAGTTGM CHQADATRPS
Isotype:	IgG
Cross-Reactivity:	Human, Mouse, Rat
Characteristics:	Polyclonal Antibodies
Purification:	Affinity purification

Target Details

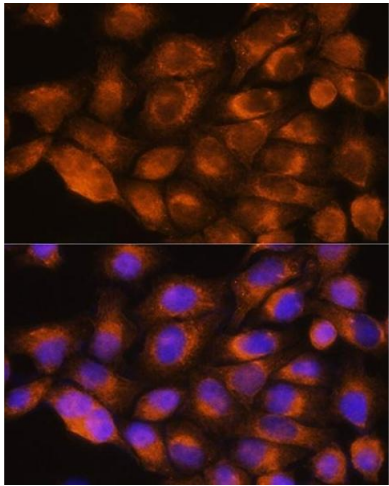
Target:	alpha 1 Adrenergic Receptor (ADRA1A)
Alternative Name:	ADRA1A (ADRA1A Products)
Background:	<p>Alpha-1-adrenergic receptors (alpha-1-ARs) are members of the G protein-coupled receptor superfamily. They activate mitogenic responses and regulate growth and proliferation of many cells. There are 3 alpha-1-AR subtypes: alpha-1A, -1B and -1D, all of which signal through the Gq/11 family of G-proteins and different subtypes show different patterns of activation. This gene encodes alpha-1A-adrenergic receptor. Alternative splicing of this gene generates four transcript variants, which encode four different isoforms with distinct C-termini but having similar ligand binding properties.,ADRA1A,ADRA1C,ADRA1L1,ALPHA1AAR,Signal Transduction,G protein signaling,G-Protein-Coupled Receptors(GPCR),Cell Biology & Developmental Biology,Apoptosis,Endocrine & Metabolism,AMPK Signaling Pathway,Neuroscience,ADRA1A</p>
Molecular Weight:	32-52 kDa
Gene ID:	148
UniProt:	P35348
Pathways:	AMPK Signaling

Application Details

Application Notes:	WB,1:500 - 1:2000,IHC,1:50 - 1:100,IF,1:50 - 1:200
Restrictions:	For Research Use only

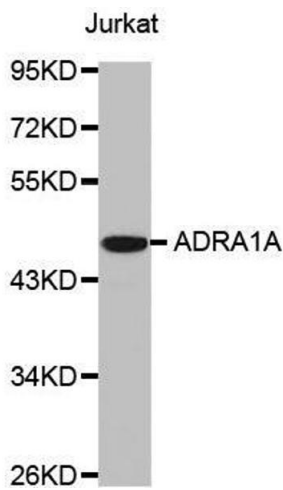
Handling

Buffer:	PBS with 0.02 % sodium azide,50 % glycerol, pH 7.3.
Preservative:	Sodium azide
Precaution of Use:	This product contains Sodium azide: a POISONOUS AND HAZARDOUS SUBSTANCE which should be handled by trained staff only.
Storage:	-20 °C
Storage Comment:	Store at -20°C. Avoid freeze / thaw cycles.



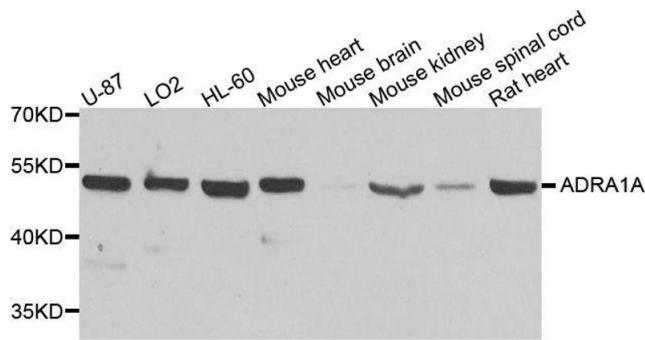
Immunofluorescence

Image 1. Immunofluorescence analysis of HeLa cells using A antibody (ABIN1678588, ABIN3015506, ABIN3015508 and ABIN6218562) at dilution of 1:100. Blue: DAPI for nuclear staining.



Western Blotting

Image 2. Western blot analysis of extracts of Jurkat cell line, using ADRA1A antibody.



Western Blotting

Image 3. Western blot analysis of extracts of various cell lines, using ADRA1A antibody.

Please check the [product details page](#) for more images. Overall 7 images are available for ABIN1678588.