



[Go to Product page](#)

Datasheet for ABIN1678744
anti-ARHGEF2 antibody

1 Image

Overview

Quantity:	100 µg
Target:	ARHGEF2
Reactivity:	Human
Host:	Rabbit
Clonality:	Polyclonal
Conjugate:	This ARHGEF2 antibody is un-conjugated
Application:	Western Blotting (WB), Immunohistochemistry (IHC)

Product Details

Immunogen:	Recombinant Protein
Cross-Reactivity:	Mouse (Murine), Rat (Rattus)

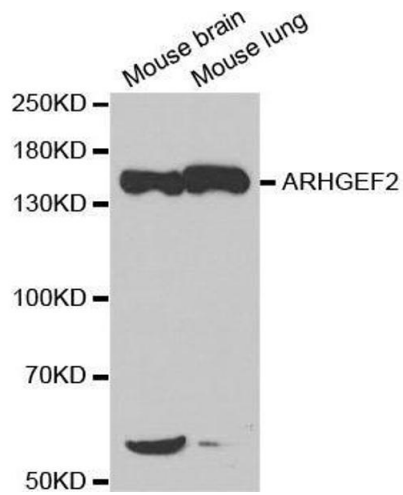
Target Details

Target:	ARHGEF2
Alternative Name:	ARHGEF2 (ARHGEF2 Products)
Molecular Weight:	986 kDa
Gene ID:	9181
UniProt:	Q92974
Pathways:	Negative Regulation of intrinsic apoptotic Signaling

Application Details

Restrictions: For Research Use only

Images



Western Blotting

Image 1. Western blot analysis of extracts of various cell lines, using ARHGEF2 antibody.