

Datasheet for ABIN1678782

**anti-STAT2 antibody****3** Images[Go to Product page](#)

## Overview

Quantity:	100 µg
Target:	STAT2
Reactivity:	Human
Host:	Rabbit
Clonality:	Monoclonal
Conjugate:	This STAT2 antibody is un-conjugated
Application:	Western Blotting (WB)

## Product Details

Immunogen:	A synthesized peptide derived from human STAT2
Isotype:	IgG
Cross-Reactivity:	Human, Mouse, Rat
Characteristics:	Monoclonal Antibodies
Purification:	Affinity purification

## Target Details

Target:	STAT2
Alternative Name:	STAT2 ( <a href="#">STAT2 Products</a> )
Background:	The protein encoded by this gene is a member of the STAT protein family. In response to cytokines and growth factors, STAT family members are phosphorylated by the receptor

## Target Details

associated kinases, and then form homo- or heterodimers that translocate to the cell nucleus where they act as transcription activators. In response to interferon (IFN), this protein forms a complex with STAT1 and IFN regulatory factor family protein p48 (ISGF3G), in which this protein acts as a transactivator, but lacks the ability to bind DNA directly. Transcription adaptor P300/CBP (EP300/CREBBP) has been shown to interact specifically with this protein, which is thought to be involved in the process of blocking IFN-alpha response by adenovirus. Multiple transcript variants encoding different isoforms have been found for this gene. [provided by RefSeq, Mar 2010],IMD44, ISGF-3, P113, STAT113,Epigenetics & Nuclear Signaling,ErbB-HER Signaling Pathway,IL-6 Receptor Signaling Pathway,Immunology & Inflammation,Protein phosphorylation,Signal Transduction,Transcription Factors,STAT2

Molecular Weight: 97 kDa

Gene ID: 6773

UniProt: [P52630](#)

Pathways: [JAK-STAT Signaling](#), [Hepatitis C](#), [CXCR4-mediated Signaling Events](#)

## Application Details

Application Notes: WB,1:500 - 1:2000

Restrictions: For Research Use only

## Handling

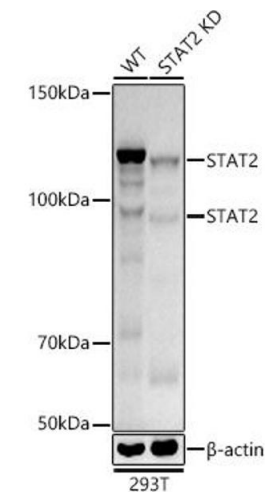
Buffer: PBS with 0.02 % sodium azide,0.05 % BSA,50 % glycerol, pH 7.3.

Preservative: Sodium azide

Precaution of Use: This product contains Sodium azide: a POISONOUS AND HAZARDOUS SUBSTANCE which should be handled by trained staff only.

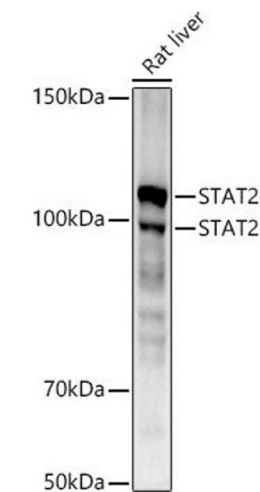
Storage: -20 °C

Storage Comment: Store at -20°C. Avoid freeze / thaw cycles.



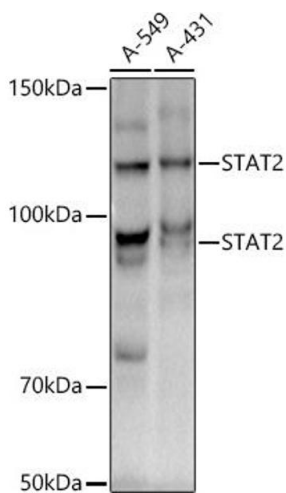
#### Western Blotting

**Image 1.** Western blot analysis of extracts from wild type(WT) and ST knockdown (KD) 293T cells, using ST antibody (ABIN1678782, ABIN3017845, ABIN3017846 and ABIN7101526) at 1:1000 dilution.Secondary antibody: HRP Goat Anti-Rabbit IgG (H+L) (ABIN1684268 and ABIN3020597) at 1:10000 dilution.Lysates/proteins: 25 µg per lane.Blocking buffer: 3 % nonfat dry milk in TBST.Detection: ECL Basic Kit (RM00020).Exposure time: 180s.



#### Western Blotting

**Image 2.** Western blot analysis of extracts of Rat liver, using ST antibody (ABIN1678782, ABIN3017845, ABIN3017846 and ABIN7101526) at 1:1000 dilution.Secondary antibody: HRP Goat Anti-Rabbit IgG (H+L) (ABIN1684268 and ABIN3020597) at 1:10000 dilution.Lysates/proteins: 25 µg per lane.Blocking buffer: 3 % nonfat dry milk in TBST.Detection: ECL Basic Kit (RM00020).Exposure time: 60s.



#### Western Blotting

**Image 3.** Western blot analysis of extracts of various cell lines, using ST antibody (ABIN1678782, ABIN3017845, ABIN3017846 and ABIN7101526) at 1:1000 dilution.Secondary antibody: HRP Goat Anti-Rabbit IgG (H+L) (ABIN1684268 and ABIN3020597) at 1:10000 dilution.Lysates/proteins: 25 µg per lane.Blocking buffer: 3 % nonfat dry milk in TBST.Detection: ECL Basic Kit (RM00020).Exposure time: 180s.