

Datasheet for ABIN1678797

anti-ATPase Inhibitory Factor 1 antibody (AA 26-106)

5 Images

[Go to Product page](#)

Overview

Quantity:	100 µg
Target:	ATPase Inhibitory Factor 1 (ATPIF1)
Binding Specificity:	AA 26-106
Reactivity:	Human
Host:	Rabbit
Clonality:	Polyclonal
Conjugate:	This ATPase Inhibitory Factor 1 antibody is un-conjugated
Application:	Western Blotting (WB), Immunofluorescence (IF)

Product Details

Immunogen:	Recombinant fusion protein containing a sequence corresponding to amino acids 26-106 of human ATPIF1 (NP_057395.1).
Sequence:	GSDQSENVDR GAGSIREAGG AFGKREQAEE ERYFRAQSRE QLAALKKHHE EEIVHHKKEI ERLQKEIERH KQKIKMLKHD D
Isotype:	IgG
Cross-Reactivity:	Human, Mouse
Characteristics:	Polyclonal Antibodies
Purification:	Affinity purification

Target Details

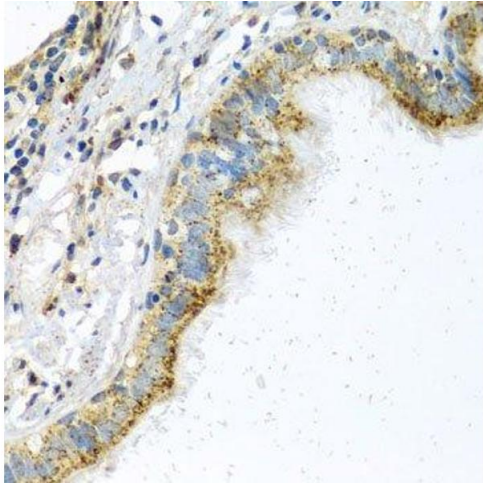
Target:	ATPase Inhibitory Factor 1 (ATPIF1)
Alternative Name:	ATPIF1 (ATPIF1 Products)
Background:	This gene encodes a mitochondrial ATPase inhibitor. Alternative splicing occurs at this locus and three transcript variants encoding distinct isoforms have been identified.,ATPIF1,ATPI,ATPIP,IP,Cancer,Signal Transduction,Endocrine & Metabolism,Mitochondrial metabolism,Mitochondrial markers,Oxidative phosphorylation,Cardiovascular,Angiogenesis,ATPIF1
Molecular Weight:	6 kDa/7 kDa/12 kDa
Gene ID:	93974
UniProt:	Q9UII2

Application Details

Application Notes:	WB,1:500 - 1:2000,IF,1:50 - 1:100
Restrictions:	For Research Use only

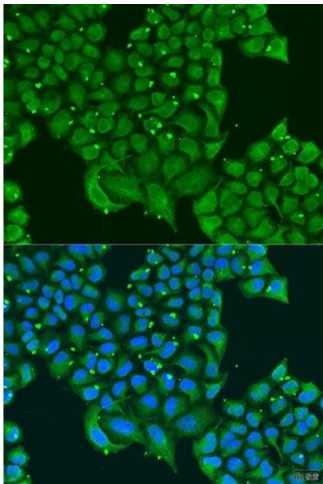
Handling

Buffer:	PBS with 0.02 % sodium azide,50 % glycerol, pH 7.3.
Preservative:	Sodium azide
Precaution of Use:	This product contains Sodium azide: a POISONOUS AND HAZARDOUS SUBSTANCE which should be handled by trained staff only.
Storage:	-20 °C
Storage Comment:	Store at -20°C. Avoid freeze / thaw cycles.



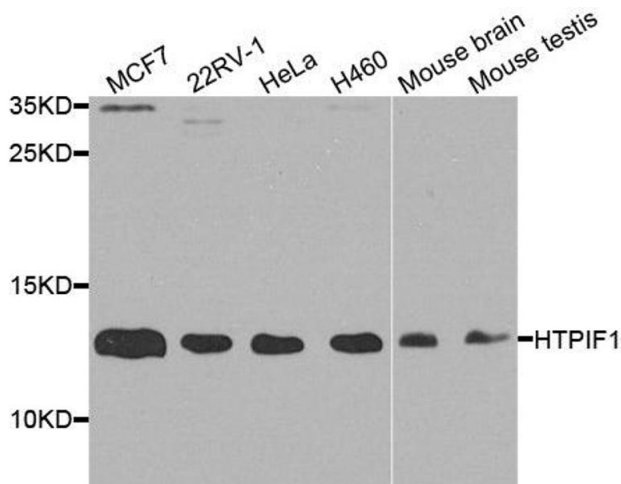
Immunohistochemistry (Paraffin-embedded Sections)

Image 1. Immunohistochemistry of paraffin-embedded human trachea using ATPIF1 antibody.



Immunofluorescence

Image 2. Immunofluorescence analysis of U2OS cells using ATPIF1 antibody.



Western Blotting

Image 3. Western blot analysis of extracts of various cell lines, using ATPIF1 antibody.

Please check the [product details page](#) for more images. Overall 5 images are available for ABIN1678797.