

Datasheet for ABIN1678880 **anti-MAGEA1 antibody**



[Go to Product page](#)

1 Image

Overview

Quantity:	100 µg
Target:	MAGEA1
Reactivity:	Human
Host:	Rabbit
Clonality:	Monoclonal
Conjugate:	This MAGEA1 antibody is un-conjugated
Application:	Western Blotting (WB)

Product Details

Immunogen:	A synthesized peptide derived from human MAGE-1/MAGE1A
Isotype:	IgG
Cross-Reactivity:	Human, Mouse
Characteristics:	Monoclonal Antibodies
Purification:	Affinity purification

Target Details

Target:	MAGEA1
Alternative Name:	MAGEA1 (MAGEA1 Products)
Background:	This gene is a member of the MAGEA gene family. The members of this family encode proteins with 50 to 80 % sequence identity to each other. The promoters and first exons of the MAGEA

Target Details

genes show considerable variability, suggesting that the existence of this gene family enables the same function to be expressed under different transcriptional controls. The MAGEA genes are clustered at chromosomal location Xq28. They have been implicated in some hereditary disorders, such as dyskeratosis congenita. [provided by RefSeq, Jul 2008],CT1.1, MAGE1,Cancer,Immunology & Inflammation,Tumor biomarkers,Tumor immunology,Tumor immunology_Tumor-associated antigens,MAGEA1

Molecular Weight:	46 kDa
-------------------	--------

Gene ID:	4100
----------	------

UniProt:	P43355
----------	------------------------

Application Details

Application Notes:	WB,1:500 - 1:2000
--------------------	-------------------

Restrictions:	For Research Use only
---------------	-----------------------

Handling

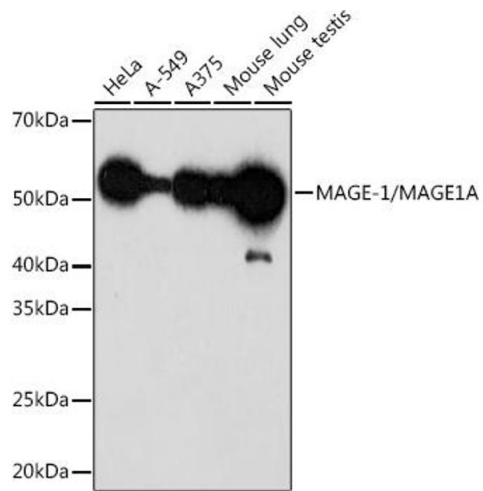
Buffer:	PBS with 0.02 % sodium azide,0.05 % BSA,50 % glycerol, pH 7.3.
---------	--

Preservative:	Sodium azide
---------------	--------------

Precaution of Use:	This product contains Sodium azide: a POISONOUS AND HAZARDOUS SUBSTANCE which should be handled by trained staff only.
--------------------	--

Storage:	-20 °C
----------	--------

Storage Comment:	Store at -20°C. Avoid freeze / thaw cycles.
------------------	---



Western Blotting

Image 1. Western blot analysis of extracts of various cell lines, using MAGE-1/MA Rabbit mAb (ABIN1678880, ABIN3015292, ABIN3015293 and ABIN7101339) at 1:1000 dilution. Secondary antibody: HRP Goat Anti-Rabbit IgG (H+L) (ABIN1684268 and ABIN3020597) at 1:10000 dilution. Lysates/proteins: 25 µg per lane. Blocking buffer: 3 % nonfat dry milk in TBST. Detection: ECL Enhanced Kit (RM00021). Exposure time: 3 min.