



[Go to Product page](#)

Datasheet for ABIN1679040
anti-Cyclin A antibody (AA 1-200)

4 Images

Overview

Quantity:	100 µg
Target:	Cyclin A (CCNA2)
Binding Specificity:	AA 1-200
Reactivity:	Human
Host:	Rabbit
Clonality:	Polyclonal
Conjugate:	This Cyclin A antibody is un-conjugated
Application:	Western Blotting (WB)

Product Details

Immunogen:	Recombinant fusion protein containing a sequence corresponding to amino acids 1-200 of human Cyclin A2 (NP_001228.1).
Sequence:	MLGNSAPGPA TREAGSALLA LQQTALQEDQ ENINPEKAAP VQQRTRAAL AVLKSGNPRG LAQQRPKTR RVAPLKDLPV NDEHVTVPPW KANSKQPAFT IHVDEAEKEA QKKPAESQKI EREDALAFNS AISLPGPRKP LVPLDYPMDG SFESPHTMDM SIVLEDEKPV SVNEVPDYHE DIHTYLREME VKCKPKVGYM
Isotype:	IgG
Cross-Reactivity:	Human, Mouse, Rat
Characteristics:	Polyclonal Antibodies
Purification:	Affinity purification

Target Details

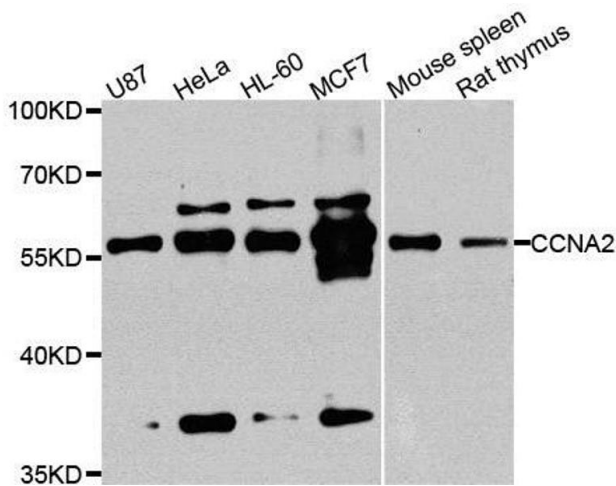
Target:	Cyclin A (CCNA2)
Alternative Name:	CCNA2 (CCNA2 Products)
Background:	<p>The protein encoded by this gene belongs to the highly conserved cyclin family, whose members are characterized by a dramatic periodicity in protein abundance through the cell cycle. Cyclins function as regulators of CDK kinases. Different cyclins exhibit distinct expression and degradation patterns which contribute to the temporal coordination of each mitotic event. In contrast to cyclin A1, which is present only in germ cells, this cyclin is expressed in all tissues tested. This cyclin binds and activates CDC2 or CDK2 kinases, and thus promotes both cell cycle G1/S and G2/M transitions.,CCN1,CCNA,Cyclin A2,CCNA2,cyclin-A2,Epigenetics & Nuclear Signaling,DNA Damage & Repair,Cancer,Cell Biology & Developmental Biology,Cell Cycle,Centrosome,Cyclins,Endocrine & Metabolism,AMPK Signaling Pathway,Cardiovascular,Lipids,Lipoproteins/Apolipoproteins,CCNA2</p>
Molecular Weight:	48 kDa
Gene ID:	890
UniProt:	P20248
Pathways:	PI3K-Akt Signaling , Cell Division Cycle , AMPK Signaling , Mitotic G1-G1/S Phases , DNA Replication , M Phase , Synthesis of DNA

Application Details

Application Notes:	WB,1:500 - 1:2000
Restrictions:	For Research Use only

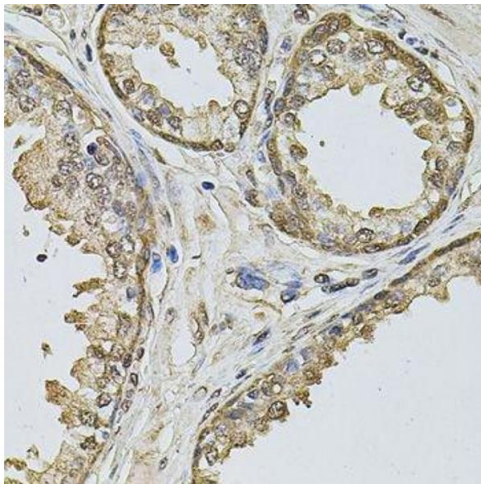
Handling

Buffer:	PBS with 0.02 % sodium azide,50 % glycerol, pH 7.3.
Preservative:	Sodium azide
Precaution of Use:	This product contains Sodium azide: a POISONOUS AND HAZARDOUS SUBSTANCE which should be handled by trained staff only.
Storage:	-20 °C
Storage Comment:	Store at -20°C. Avoid freeze / thaw cycles.



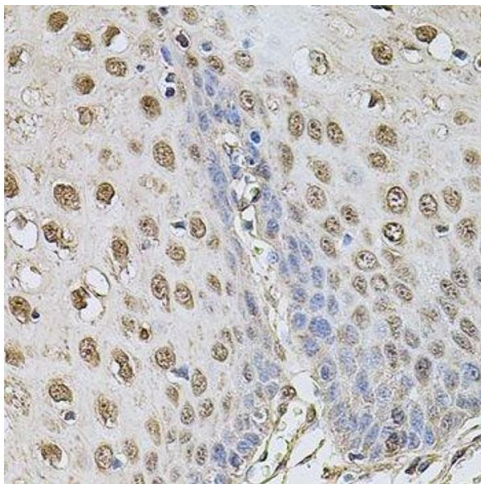
Western Blotting

Image 1. Western blot analysis of extracts of various cell lines, using CCNA2 antibody.



Immunohistochemistry (Paraffin-embedded Sections)

Image 2. Immunohistochemistry of paraffin-embedded human prostate using CCNA2 antibody.



Immunohistochemistry (Paraffin-embedded Sections)

Image 3. Immunohistochemistry of paraffin-embedded human esophagus using CCNA2 antibody.

Please check the [product details page](#) for more images. Overall 4 images are available for ABIN1679040.