

Datasheet for ABIN1679046
anti-Cyclin E2 antibody (C-Term)

4 Images

[Go to Product page](#)

Overview

Quantity:	100 µg
Target:	Cyclin E2 (CCNE2)
Binding Specificity:	C-Term
Reactivity:	Human
Host:	Rabbit
Clonality:	Polyclonal
Application:	Western Blotting (WB), Immunohistochemistry (IHC)

Product Details

Immunogen:	A synthetic peptide corresponding to a sequence within amino acids 300 to the C-terminus of human Cyclin E2 (NP_477097.1).
Sequence:	ALCHFTSIEV VKKASGLEWD SISECVDWMV PFVNVVKSTS PVKLKTFKKI PMEDRHNIQT HTNYLAMLEE VNYINTFRKG GQLSPVCNGG IMTPPKSTEK PPGKH
Isotype:	IgG
Cross-Reactivity:	Human, Mouse, Rat
Characteristics:	Polyclonal Antibodies
Purification:	Affinity purification

Target Details

Target:	Cyclin E2 (CCNE2)
---------	-------------------

Target Details

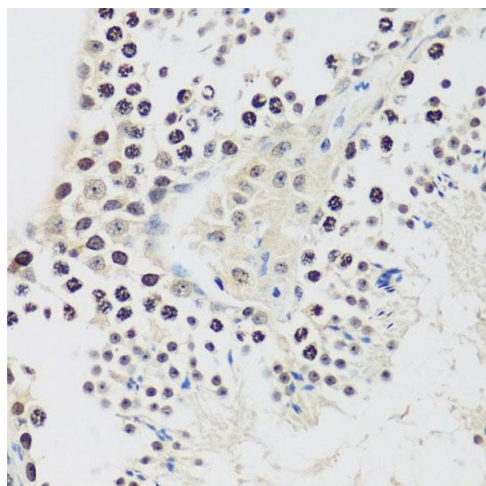
Alternative Name:	CCNE2 (CCNE2 Products)
Background:	<p>The protein encoded by this gene belongs to the highly conserved cyclin family, whose members are characterized by a dramatic periodicity in protein abundance through the cell cycle. Cyclins function as regulators of CDK kinases. Different cyclins exhibit distinct expression and degradation patterns which contribute to the temporal coordination of each mitotic event. This cyclin forms a complex with and functions as a regulatory subunit of CDK2. This cyclin has been shown to specifically interact with CIP/KIP family of CDK inhibitors, and plays a role in cell cycle G1/S transition. The expression of this gene peaks at the G1-S phase and exhibits a pattern of tissue specificity distinct from that of cyclin E1. A significantly increased expression level of this gene was observed in tumor-derived cells.,CCNE2,CYCE2,cyclin E2,Epigenetics & Nuclear Signaling,Cancer,Cell Biology & Developmental Biology,Cell Cycle,Centrosome,Cyclins,G1/S Checkpoint,Hedgehog Signaling Pathway,CCNE2</p>
Molecular Weight:	41 kDa/46 kDa
Gene ID:	9134
UniProt:	O96020
Pathways:	Cell Division Cycle , Mitotic G1-G1/S Phases

Application Details

Application Notes:	WB,1:500 - 1:2000,IHC,1:50 - 1:100
Restrictions:	For Research Use only

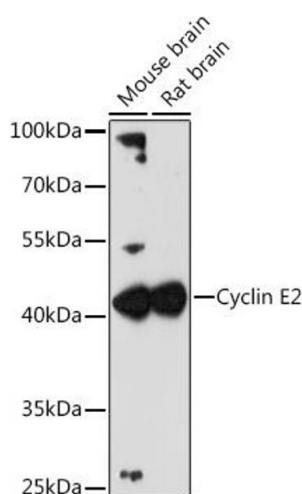
Handling

Buffer:	PBS with 0.02 % sodium azide,50 % glycerol, pH 7.3.
Preservative:	Sodium azide
Precaution of Use:	This product contains Sodium azide: a POISONOUS AND HAZARDOUS SUBSTANCE which should be handled by trained staff only.
Storage:	-20 °C
Storage Comment:	Store at -20°C. Avoid freeze / thaw cycles.



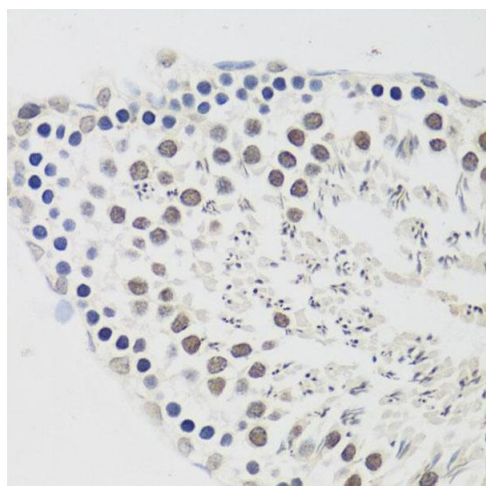
Immunohistochemistry

Image 1. Immunohistochemistry of paraffin-embedded mouse testis using Cyclin E2 antibody (ABIN1679046, ABIN3018761, ABIN3018762 and ABIN6220571) at dilution of 1:100 (40x lens). Perform microwave antigen retrieval with 10 mM PBS buffer pH 7.2 before commencing with IHC staining protocol.



Western Blotting

Image 2. Western blot analysis of extracts of various cell lines, using Cyclin E2 antibody (ABIN1679046, ABIN3018761, ABIN3018762 and ABIN6220571) at 1:3000 dilution. Secondary antibody: HRP Goat Anti-Rabbit IgG (H+L) (ABIN1684268 and ABIN3020597) at 1:10000 dilution. Lysates/proteins: 25 µg per lane. Blocking buffer: 3 % nonfat dry milk in TBST. Detection: ECL Enhanced Kit (RM00021). Exposure time: 90s.



Immunohistochemistry

Image 3. Immunohistochemistry of paraffin-embedded rat testis using Cyclin E2 antibody (ABIN1679046, ABIN3018761, ABIN3018762 and ABIN6220571) at dilution of 1:100 (40x lens). Perform microwave antigen retrieval with 10 mM PBS buffer pH 7.2 before commencing with IHC staining protocol.

Please check the [product details page](#) for more images. Overall 4 images are available for ABIN1679046.