

Datasheet for ABIN1679062
anti-BCL10 antibody



[Go to Product page](#)

1 Image

Overview

Quantity:	100 µg
Target:	BCL10
Reactivity:	Human
Host:	Rabbit
Clonality:	Monoclonal
Conjugate:	This BCL10 antibody is un-conjugated
Application:	Western Blotting (WB)

Product Details

Immunogen:	A synthesized peptide derived from human Bcl10
Isotype:	IgG
Cross-Reactivity:	Human
Characteristics:	Monoclonal Antibodies
Purification:	Affinity purification

Target Details

Target:	BCL10
Alternative Name:	BCL10 (BCL10 Products)
Background:	This gene was identified by its translocation in a case of mucosa-associated lymphoid tissue (MALT) lymphoma. The protein encoded by this gene contains a caspase recruitment domain

Target Details

(CARD), and has been shown to induce apoptosis and to activate NF-kappaB. This protein is reported to interact with other CARD domain containing proteins including CARD9, 10, 11 and 14, which are thought to function as upstream regulators in NF-kappaB signaling. This protein is found to form a complex with MALT1, a protein encoded by another gene known to be translocated in MALT lymphoma. MALT1 and this protein are thought to synergize in the activation of NF-kappaB, and the deregulation of either of them may contribute to the same pathogenetic process that leads to the malignancy. Alternative splicing results in multiple transcript variants. [provided by RefSeq, Mar 2016],CARMEN, CIPER, CLAP, IMD37, c-E10, mE10,Apoptosis,Apoptosis_Bcl 2 family,Apoptosis_Caspases,B Cell Receptor Signaling Pathway,Cancer,Cell Biology & Developmental Biology,Endocrine & Metabolism,Immunology & Inflammation,Invasion and Metastasis,Signal Transduction,T Cell Receptor Signaling Pathway,BCL10

Molecular Weight: 31 kDa

Gene ID: 8915

UniProt: [O95999](#)

Pathways: [TCR Signaling](#), [Fc-epsilon Receptor Signaling Pathway](#), [Activation of Innate immune Response](#), [Positive Regulation of Immune Effector Process](#), [Production of Molecular Mediator of Immune Response](#), [Tube Formation](#), [Positive Regulation of Endopeptidase Activity](#), [BCR Signaling](#), [Ubiquitin Proteasome Pathway](#), [S100 Proteins](#)

Application Details

Application Notes: WB,1:500 - 1:2000

Restrictions: For Research Use only

Handling

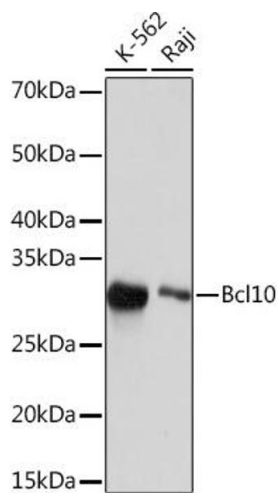
Buffer: PBS with 0.02 % sodium azide,0.05 % BSA,50 % glycerol, pH 7.3.

Preservative: Sodium azide

Precaution of Use: This product contains Sodium azide: a POISONOUS AND HAZARDOUS SUBSTANCE which should be handled by trained staff only.

Storage: -20 °C

Storage Comment: Store at -20°C. Avoid freeze / thaw cycles.



Western Blotting

Image 1. Western blot analysis of extracts of various cell lines, using Bcl10 Rabbit mAb (ABIN1679062, ABIN3019009, ABIN3019010 and ABIN7101699) at 1:1000 dilution. Secondary antibody: HRP Goat Anti-Rabbit IgG (H+L) (ABIN1684268 and ABIN3020597) at 1:10000 dilution. Lysates/proteins: 25 µg per lane. Blocking buffer: 3 % nonfat dry milk in TBST. Detection: ECL Basic Kit (RM00020). Exposure time: 10s.